



**Building
Products**

*Experience, value and service
is our commitment to you.*

Retaining Wall Products



BCP Building Products

18 Kirkcaldy Street Bathurst NSW 2795

Phone 02 6331 2777

Fax 02 6331 6510

sales@bcpbuildingproducts.com.au

www.bcpbuildingproducts.com.au

Garden Lockstone

The Garden Lockstone retaining wall system is for general purpose use in situation up to 1.50m high. The advantage of Garden Lockstone is no mortar is required and can be used in straight or curved wall designs.

Specifications: Length 390mm x Height 130mm x Width 230mm. Coverage 19.72 blocks per square metre.

Check your local council for construction of retaining wall requirements. They might require engineer details.



Laying Instructions

Construction is dependant on footing type and wall height. (please refer engineer's dwg)

Retaining wall can be constructed of all hollow blocks when max wall height is 1m.

Walls above 1m require a concrete footing and should be constructed entirely of solid blocks.

We recommend using a Capping Block to complete your project. Capping blocks are available in Bull Nose Cap, Split Face or Smooth Face.

METHOD 1:

Sand footing

Recommended solid blocks be used on first course, hollow blocks for remaining courses, Capping course on top.

METHOD 2:

Concrete footing

Recommended hollow blocks can be used on all courses, Capping course on top.

Choose footing type then calculate the number of solids, hollows and capping blocks required. End blocks (straight sides) are used at end of wall where exposed or at right angle corners. **Remember the first course is half buried below ground level.**

Example:

A wall 15.6m in length and 910mm high.

15.6 divided by 0.39 = 40.

910 divided by 130mm = 7 courses plus cap.

	Hollows	Solids	Caps
Method 1	240	40	40
Method 2	280	N/A	40



Clipstone retaining wall is an interlocking system for general purpose applications up to 960mm in height. The advantage of Clipstone is no mortar is required and can be used in straight or curved wall designs.

Specifications: Length 390mm x Height 160mm x Width 190mm. Coverage 16.2 blocks per square meter

Check your local council for construction of retaining wall requirements. They might require engineer details.



Laying Instructions

Construction is dependant on footing type and wall height (please refer engineer's dwg)

We recommend using a Capping Block to complete your project. Capping blocks are available in Bull Nose Cap, Split Face or Smooth Face.

FOOTING TYPE

Sand footing - may be used on walls up to 800mm height (5 courses). Blocks may require sand fill please refer engineer's dwg. Capping course on top.

Concrete footing - hollow blocks can be used on all courses. Capping course on top.

Choose footing type then calculate number of blocks required. Remember the first course is half buried below ground level.

Example:

A wall 19.5m in length and 640mm high.

$19.5 \text{ divided by } 0.39 = 50.640\text{m divided by } 160\text{mm} = 4 \text{ courses plus a cap.}$

The number of blocks required are 200 blocks and 50 caps.

Important Information For All Retaining Wall Construction

It is recommended site suitability be checked by a qualified engineer. The product design assumes no ground water to be present. For site conditions where ground water exists it is recommended the engagement of an engineer and/or use of suitable moisture control barriers and or sealers.

Lockstone & Clipstone General Instructions

- Set out and mark wall position.
Dig footing trench 350-400mm wide x 140-160mm deep.
Make sure trench is level. For sloping sites trenching might require stepping.
(stepping required at 390mm spacing and up or down 130mm increments to avoid cutting blocks)
- If concrete footing type used pour concrete approx 75mm deep and level off.
While concrete wet lay first course of blocks with retaining lug down into concrete.
Level each block (side to side and from back to front).

IMPORTANT

First course level to ensure remaining blocks position together correctly.

- If sand footing clean out loose dirt then compact. Fill trench with course layer of sand material 80-100mm deep and level.
Place first layer of blocks into sand lug down and bed down using a rubber mallet. Use string line along back of block to ensure alignment.

IMPORTANT: First course level to ensure remaining blocks position together correctly.

- Position agricultural drain behind first course being sure sufficient fall allowing water to flow from one end to the other.
Cover drain with gravel or free draining sand to top of first course to width of 200-300mm (see engineer's dwg)
- Sweep off loose dirt from top of first course.
You are now ready to lay next course.
- Place lug of second course behind the first course. To obtain bond pattern position ensure vertical joint of first course is centered on second course block. If wall is vertical at ends use solid end block. Cut solid end block into half for use every second course.
- After second course laid shovel gravel or free draining sand behind wall and compact.
- Repeat these steps until you are ready to lay capping block. Glue capping block down to final course with a construction adhesive.

NOTE: When building curves remove extreme of locking lug wing with a hammer. Use protective eye wear.

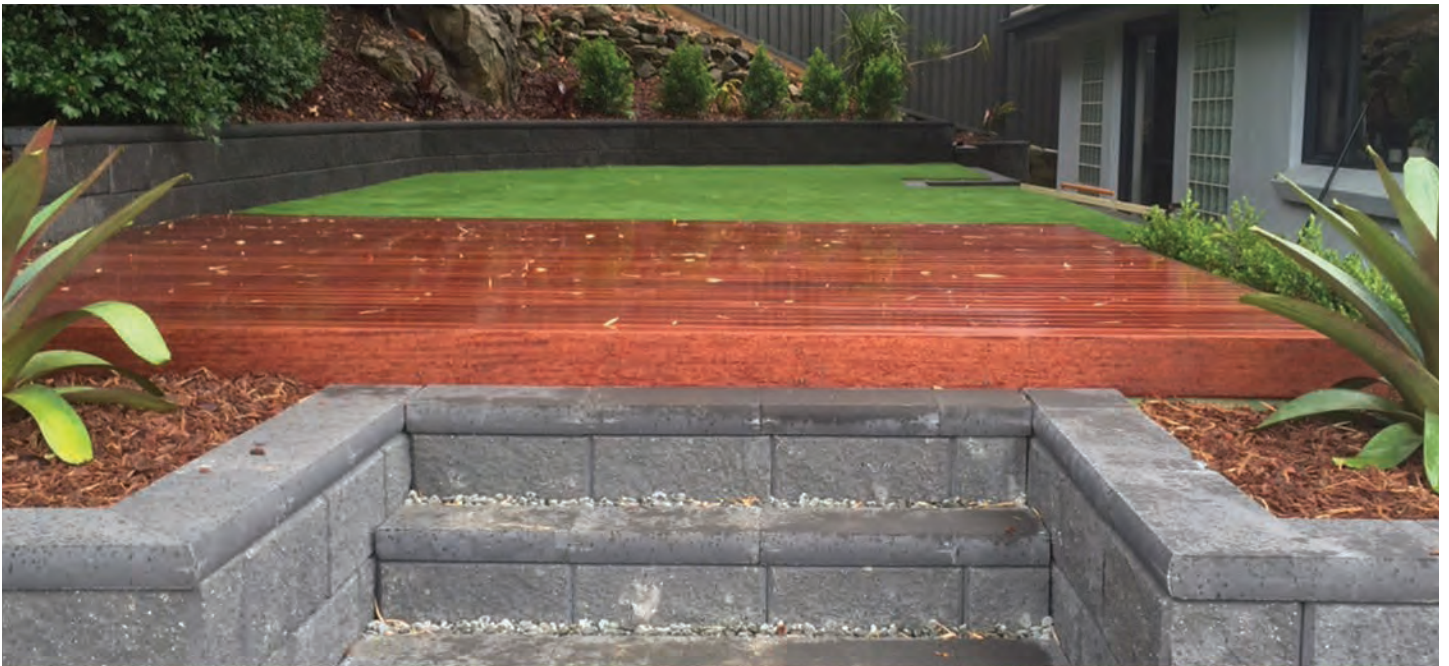


Panorama Retaining Wall

Panorama Retaining Wall is BCP's first double-sided dry stack retaining wall system.

Our unique system allows you to show split face one side and smooth the other. With bull nose and split face capping available and features such as quoining on corners or random smooth blocks in a split face surface, this product allows for unique design finishes.

Engineer-designed, self locking lugs and corner blocks allow for ease of construction resulting in an exceptionally stable and professionally finished wall.



- Vertical Dry Stack – No Set Back
- Double Faced – Split face one side, smooth face on opposing side of block
- Wall height engineered to 1200mm core filled on concrete footing
- Wallheight engineered to 800mm with zero core fill, compacted and stabilised based only
- Versatility in construction as block can be laid with locking lugs up or down, top course must be inverted to allow flat surface to fix Bull Nose Capping
- Universal Corner block with 1 x split end and side, 1 x smooth end and side per block

Dimensions		Capping	
Standard Block	(L) 400mm, (H) 200mm, (D) 230mm	Bull Nose	(L) 390mm, (H) 65mm, (D) 230mm
Corner Block	(L) 400mm, (H) 200mm, (D) 200mm	Split FAce	(L) 390mm, (H) 65mm, (D) 200mm

REFER TO BACK PAGE OF BROCHURE FOR COLOUR SELECTION.

Concrete Sleepers

BCP Concrete Sleepers offer a cost effective method for your Retaining Wall needs.

The added benefit, unlike a lot of timber products, is that our sleepers don't rot or warp because they are manufactured with reinforced Coloured Concrete.

They are finished with a Woodgrain or Rockface appearance and come in two distinct colours – Charcoal or Cream.

As part of our Sleeper Retaining Wall system we offer galvanised C Channel and H Channel posts cut to length.



Finish

Woodgrain | Rockface

Colour

Charcoal | Cream



Sleeper Dimensions

1775mm x 185mm x 75mm | Weight 52kg approx.

Check your local Council for construction of retaining wall requirements. They might require engineer details.

Construction Method

Construction of your wall may vary and could be dependent on different site conditions.

Please note post heights are only a guide and different soil types could result in revised post lengths.

We recommend concreting posts into place with bagged concrete mix or ordering premixed concrete from your local supplier.

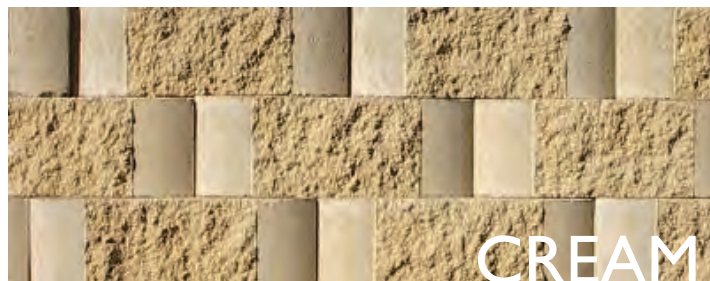
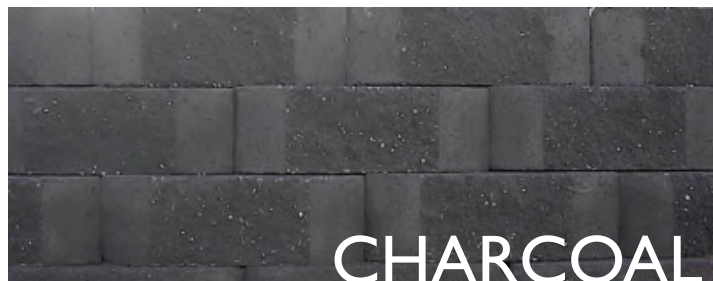
Allow for a slight variance in length when setting out your post spacing.

IMPORTANT

- A key part of the construction of any Retaining Wall is the backfill. Please ensure free draining course material is used in conjunction with an Ag Drain.
- Make sure that the first course is level to ensure the remaining sleepers position together correctly.
- Always where possible start at the lowest section of the wall if working on a sloping site. This will enable you to position the base course accurately so as not to leave any gaps visible between the bottom of the wall and your intended surface adjacent to it.
- On flat sites partially bury the first course below the surface into a shallow trench filled with bedding material such as course sand. Using a rubber mallet bed the sleepers into place firmly and evenly.

Colours

All of our products are available in these colours:



Made to order.



Made to order.



Notes

BCP Building Products

18 Kirkcaldy Street Bathurst NSW 2795

Phone 02 6331 2777

Fax 02 6331 6510

sales@bcpbuildingproducts.com.au

www.bcpbuildingproducts.com.au



WE DELIVER TO ALL AREAS