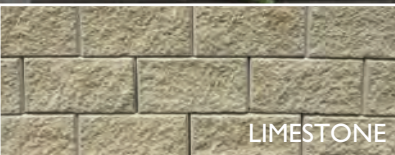


Sofala

DOUBLE-SIDED RETAINING WALL

COLOURS AVAILABLE:



The Sofala wall is BCP's latest **double-sided dry stack retaining wall system** available in Australia.

This unique system allows you to show split face one side and smooth the other. With bull nose and split face capping available and features such as quoining on corners or random smooth blocks in a split face surface, this product allows for unique design finishes.

Engineer-designed, self locking lugs and corner blocks allow for ease of construction resulting in an exceptionally stable and professionally finished wall.

split face + smooth face



**Building
Products**

*Experience, value and service
is our commitment to you.*

Sofala

DOUBLE-SIDED RETAINING WALL

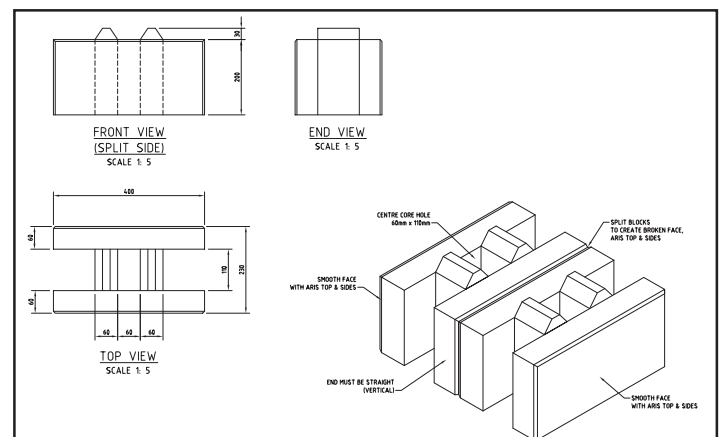
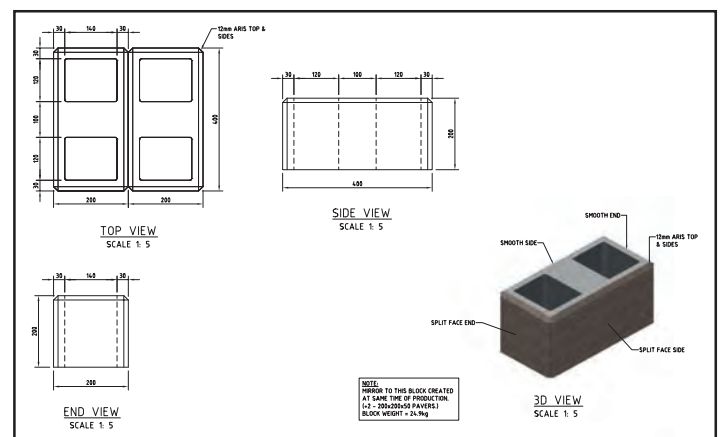
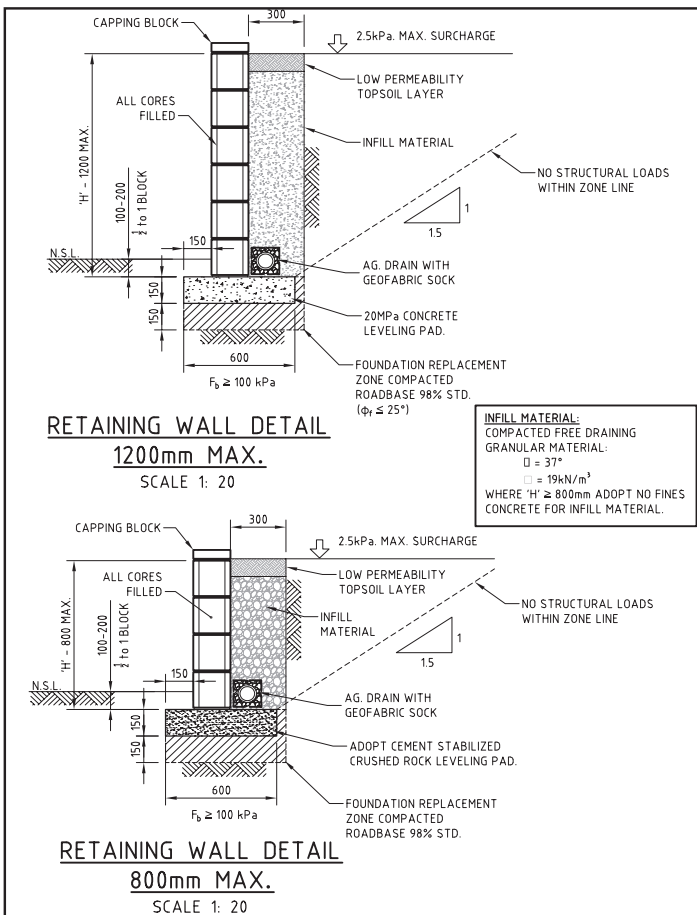
- Vertical Dry Stack – No Set Back
- Double Faced – Split face one side, smooth face on opposing side of block
- Wall height engineered to 1200mm core filled on concrete footing
- Wall height engineered to 800mm with zero core fill, compacted and stabilised based only
- Versatility in construction as block can be laid with locking lugs up or down, top course must be inverted to allow flat surface to fix Bull Nose Capping
- Universal Corner block with 1 x split end and side, 1 x smooth end and side per block

Dimensions

Standard Block (L) 400mm, (H) 160mm, (D) 230mm
 Corner Block (L) 400mm, (H) 160mm, (D) 200mm

Capping

Bull Nose (L) 390mm, (H) 65mm, (D) 230mm
 Split Face (L) 390mm, (H) 65mm, (D) 240mm



BCP Building Products

18 Kirkcaldy Street Bathurst NSW 2795

Phone 02 6331 2777 Fax 02 6331 6510

sales@bcpbuildingproducts.com.au

www.bcpbuildingproducts.com.au



**Building
 Products**

*Experience, value and service
 is our commitment to you.*