



**WOODHOUSE
WEATHERPROOF**

Primed and Treated Radiata Pine

PRODUCT AND PROFILE GUIDE



woodhouse.com.au

Operating for over 35 years, Woodhouse Timber Company is an Australian owned and operated business established and run by the Woodhouse family. Built on the foundations of quality products and excellent customer service, it has grown from its warehouse in Brisbane to a national operation with branches and representation across Australia. It is the trusted and premier wholesaler of exterior and interior timber products.



WOODHOUSE WEATHERPROOF

Woodhouse Weatherproof®



FUNGAL & TERMITE
RESISTANT



FACTORY
PRIMED

Woodhouse Weatherproof® is a range of eco-friendly, timber building products manufactured for outdoor use in all structural and decorative applications. Supplied with a genuine Industrial Pink

Primer, every Woodhouse Weatherproof® product is ready for installation and final top coatings. Manufactured by finger jointed defect-free, 100% New Zealand radiata pine, all Woodhouse Weatherproof® is available in a range of lengths and profiles to service current building practices and designs.

Chemically treated using an organic H3 LOSP preservative for resistance against termite and fungal attack, the Woodhouse Weatherproof® range is a ready to use building product intended for use in Australia's toughest conditions. When installed and maintained according to correct building practices, it offers a long term building solution for all outdoor construction.

Warranties



LIMITED PRODUCTS
GUARANTEE
AGAINST TERMITE
& FUNGAL DECAY



COATING SYSTEM
WARRANTY

We stand by our products offering a 25 warranty against fungal decay and termite attack on the Woodhouse Weatherproof® range. Chemically treated with an APVMA registered light organic solvent preservative (LOSP), it provides

genuine peace of mind. It is also factory primed with Woodhouse Weatherproof® pink (PPG-Taubmans) and if painted with the recommended top coats, there is a 10-15 year guarantee against blistering, peeling and flaking of the finish coat.

Quality Assured



Woodhouse Weatherproof® timber suppliers are audited to ensure compliance with a production system that meets the requirements of the Engineered Wood Products Program.

The scope of the certification includes compliance with the AsureQuality Programme for finger joint and glue laminated standards.

Our suppliers are also audited as part of the PineNZ certification. PineNZ mark is awarded to New Zealand manufacturers who have undergone a tough independent audit to ensure that their manufacturing processes and procedures meet key Australian and New Zealand standards.

All Woodhouse Weatherproof® branded products are end tagged to permit the correct selection for final use. Details such as the relevant Australian Standards; Adhesive type; and Structural Grading (if applicable) are indicated clearly on the product tags.

Sustainability



Woodhouse Timber Company is committed to sustainability and responsible timber practices.

By choosing Woodhouse timber, you help take care of the world's forests. Radiata pine is grown in New Zealand as an exotic species from the Monterey peninsular in California. The Resource Management Act 1991 places several requirements on forest growers, including the need to consider employment, social, cultural and environmental impacts. This results in a level of environmental responsibility that does not exist in other countries.

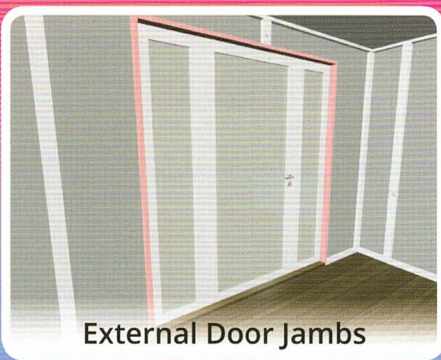
Most plantation forest owners have adopted the New Zealand Forest Owners' Environmental Code of Practice for Plantation Forestry (2007). The code of practice covers areas including the protection of waterways, endangered species, historical sites, sediment control and the management of fuel, oil and wastes. Afforestation with Radiata pine rehabilitates previously farmed soils by reducing compaction caused by stock, with soil condition improving with subsequent rotations.



All Woodhouse Weatherproof® timber comes primed on pre-primed and treated. Any cut ends or penetration points must be re-sealed and primed as part of the building and construction process. Material safety data sheet and span tables are available for download from the Woodhouse website. Please refer to the National Construction Code guidelines or your local building authority to ensure correct construction practices are followed.



Structural F7 and GL8 Laminated Beams and Posts



External Door Jambs



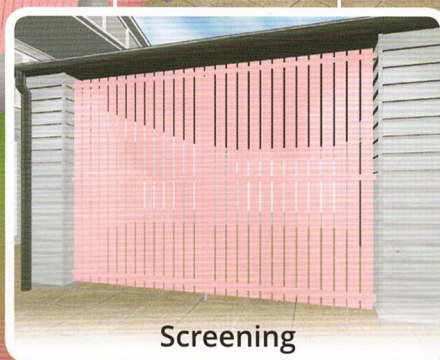
Handrail Components



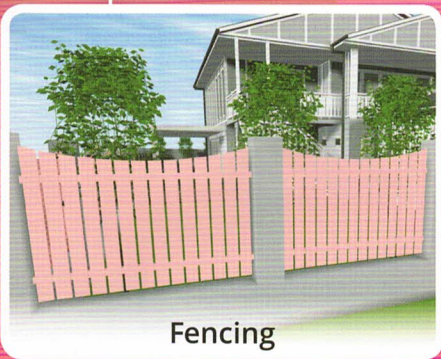
Dressed All Round (DAR)



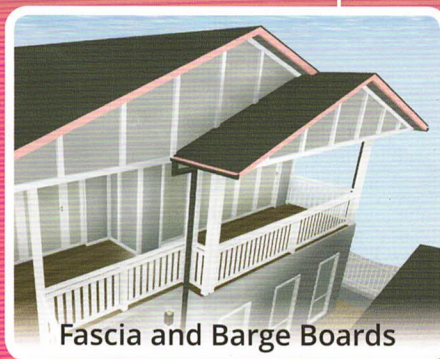
Cladding and Lining Boards



Screening



Fencing



Fascia and Barge Boards

Handrail Components and Balustrades	4
Fascia and Barge Boards	5
GL8 Laminated Beams and Posts	6
Structural F7	7
External Door Jambs	8

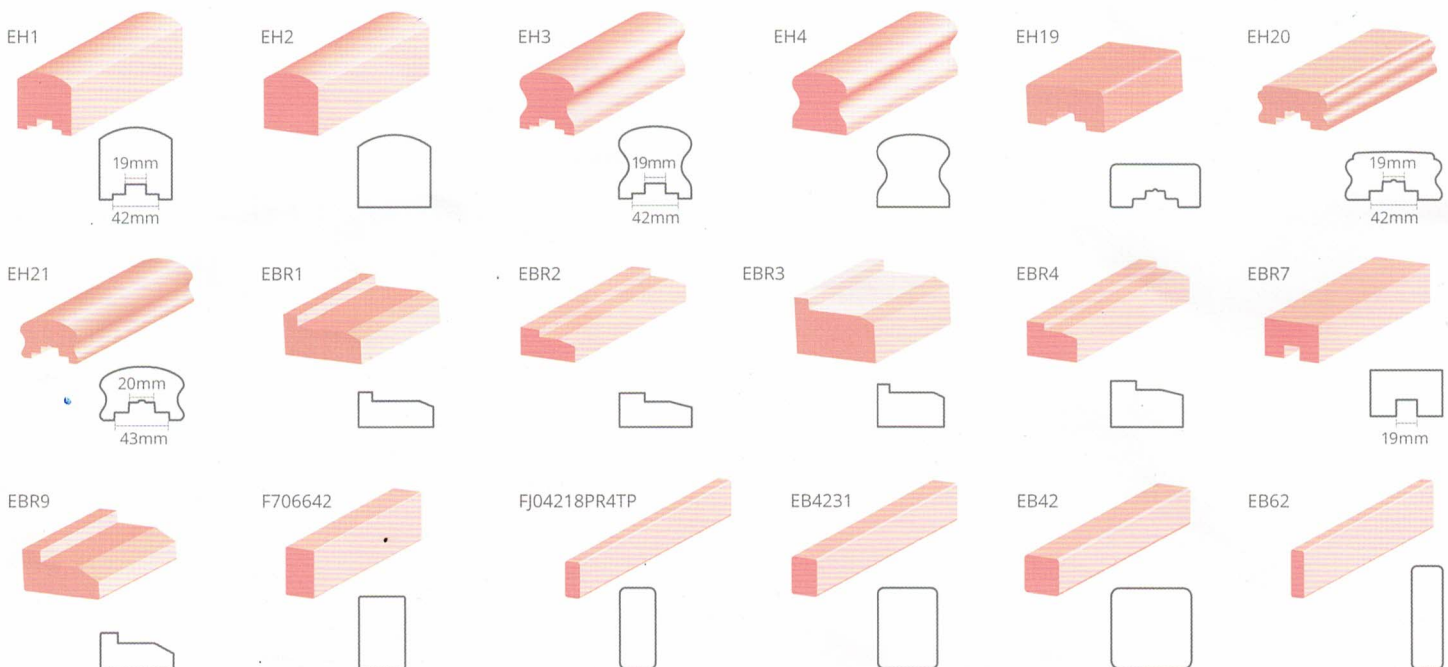
Dressed All Round (DAR) PR4	9
Dressed All Round (DAR)	9
Cladding and Lining Boards	10
Architraves and Mouldings (Exterior and Interior)	11
CONTACT DETAILS	12



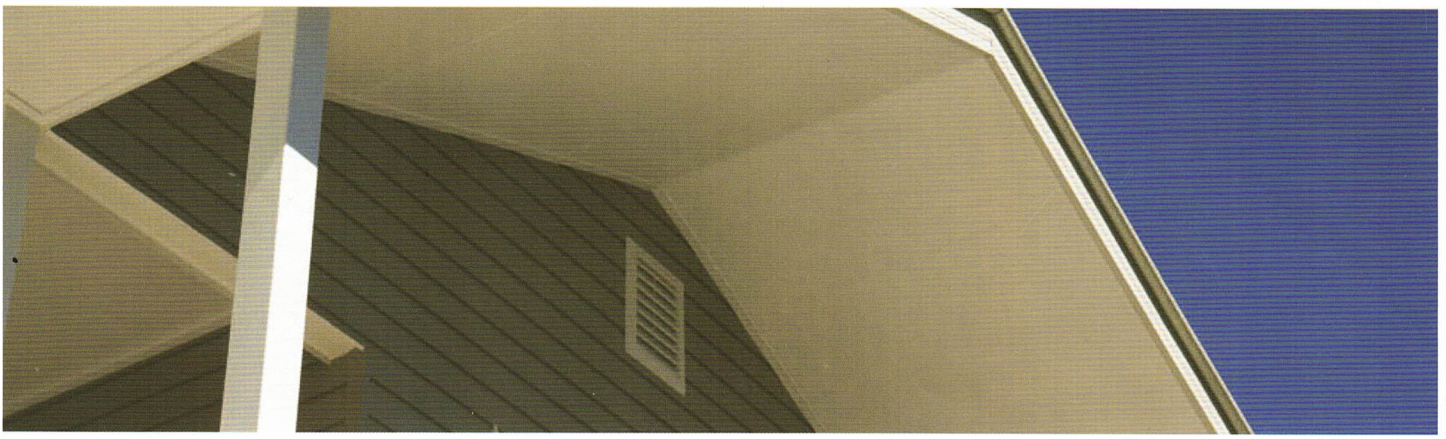
Handrail Components and Balustrades

LENGTH 5.4M

			QLD	NSW/ACT	VIC/TAS	SA	WA
HANDRAIL							
EH1	66 x 66	Breadloaf - Rebated	•				
EH2	66 x 66	Breadloaf - Non Rebated	•				
EH3	66 x 66	Ladies Waist - Rebated	•				•
EH4	66 x 66	Ladies Waist - Non Rebated	•				
EH19	85 x 42	Dressed All Round (DAR) - Rebated					•
EH20	85 x 42	Ladies Waist - Rebated	•	•	•	•	•
EH21	66 x 42	Ladies Waist - Rebated		•			
BOTTOM RAIL							
EBR1	66 x 32	Rebated - 42 x 8			•		
EBR2	66 x 32	To suit 19mm Balustrade	•				
EBR3	66 x 42	To suit 42mm Balustrade	•	•	•		•
EBR4	66 x 42	To suit 19mm Balustrade	•	•	•	•	•
EBR9	88 x 42	Rebated			•		•
MID RAIL							
EBR7	66 x 42	Mid Rail - Rebated	•	•	•	•	•
F706642	66 x 42	F7 Mid Rail	•				
BALUSTRADE							
FJ04218PR4TP	42 x 18	Balustrade	•	•	•	•	•
EB4231	42 x 31	Balustrade	•	•	•	•	
EB42	42 x 42	Balustrade	•	•	•	•	•
EB62	62 x 19	Balustrade	•	•			



Check profile and length availability with your state sales office. Certain product lengths may not be ranged as standard and may be available as special order. Note: Profiles illustrated are not to scale.

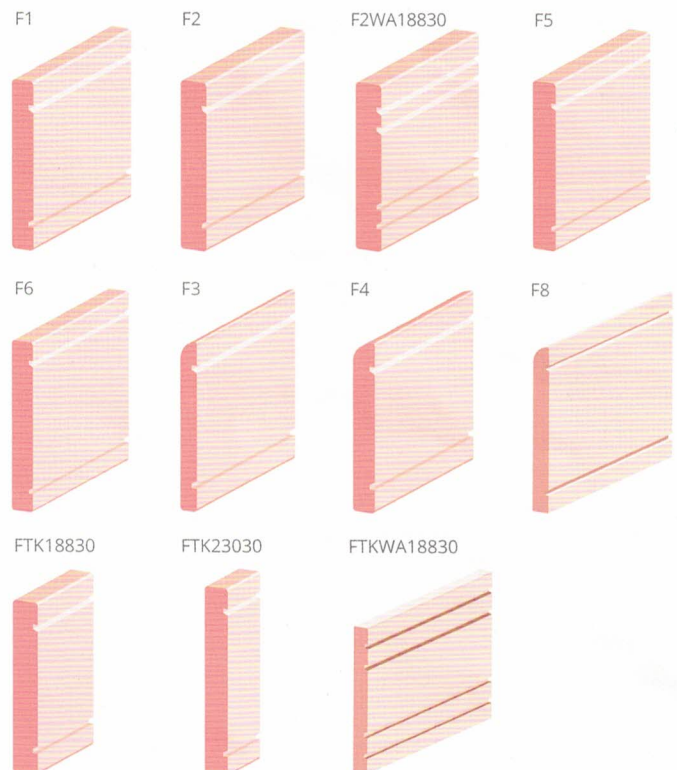
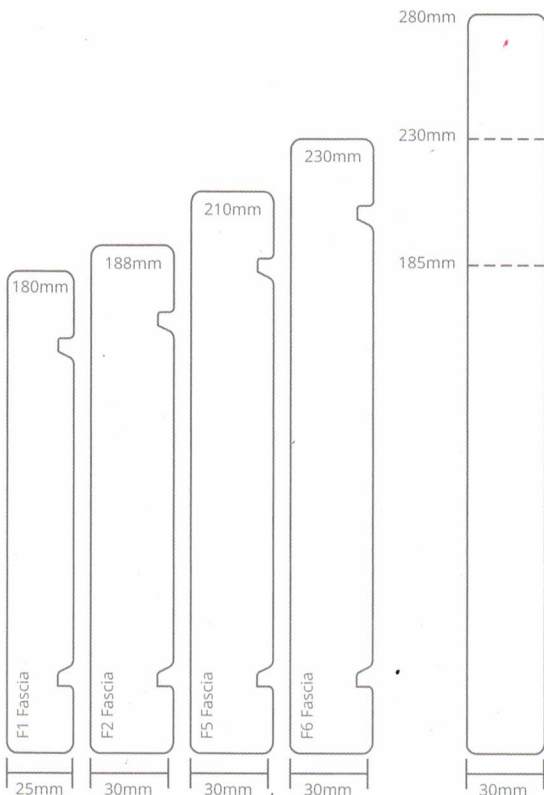


Fascia and Barge Boards

LENGTH (LM) AVAILABLE

		QLD	NSW/ACT	VIC/TAS	SA	WA
TRADITIONAL						
F1	180 x 25	3.6, 4.8, 5.4, 6.0, 7.2				
F2	188 x 30	6.0			3.6, 4.8, 5.4, 6.0, 7.2	
F5	210 x 30	6.0				
F6	230 x 30	3.6, 4.8, 5.4, 6.0, 7.2				3.6, 4.8, 5.4, 6.0, 7.2
F2WA18830	180 x 30					3.6, 4.8, 5.4, 6.0, 7.2
BULLNOSE						
F3	180 x 19		3.6, 4.8, 5.4, 6.0, 7.2			
F4	180 x 25		3.6, 4.8, 5.4, 6.0, 7.2			
F8	230 x 25		3.6, 6.0			
TIGHT KNOT GRADE - PRIMED AND GROOVED						
FTK18830	188 x 30			3.6, 4.2, 4.8, 5.4, 6.0, 6.6, 7.2	3.6, 4.8, 5.4, 6.0, 7.2	
FTK23030	230 x 30			3.6, 4.8, 5.4, 6.0, 7.2		
FTKWA18830	188 x 30					3.6, 4.8, 5.4, 6.0, 7.2

Tight knot and non grooved barge boards are available in F7 structural range (F7 185 x 30, F7 230 x 30 and F7 280 x 30).



Check profile and length availability with your state sales office. Certain product lengths may not be ranged as standard and may be available as special order. Note: Profiles illustrated are not to scale.

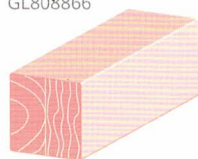


GL8 Laminated Beams and Posts

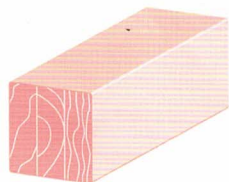
LENGTH (LM) AVAILABLE

	QLD	NSW/ACT	VIC/TAS	SA	WA	
POSTS						
GL806666	66 x 66		5.4			
GL808866	88 x 66		5.4			
GL808888	88 x 88	2.4, 2.7, 3.0, 3.6, 4.8, 5.4, 6.0	2.4, 2.7, 3.0, 3.6, 4.2, 4.8, 5.4, 6.0, 7.2	2.4, 2.7, 3.0, 3.6, 4.8, 5.4, 6.0	2.4, 2.7, 3.0, 3.6, 4.8, 5.4, 6.0	2.4, 2.7, 3.0, 3.6, 4.8, 5.4, 6.0
GL8112112	112 x 112	2.4, 2.7, 3.0, 3.6, 4.8, 5.4, 6.0	2.4, 2.7, 3.0, 3.6, 4.8, 5.4, 6.0, 7.2	2.4, 2.7, 3.0, 3.6, 4.8, 5.4, 6.0	2.4, 2.7, 3.0, 3.6, 4.8, 5.4, 6.0	2.4, 2.7, 3.0, 3.6, 4.8, 5.4, 6.0
GL8135135	135 x 135	2.4, 2.7, 3.0, 3.6, 4.8, 5.4, 6.0	2.4, 2.7, 3.0, 3.6, 4.8, 5.4, 6.0, 7.2	2.4, 2.7, 3.0, 3.6, 4.8, 5.4, 6.0	2.4, 2.7, 3.0, 3.6, 4.8, 5.4, 6.0	2.4, 2.7, 3.0, 3.6, 4.8, 5.4, 6.0
BEAMS						
GL814065	140 x 65		3.6, 4.8, 5.4, 6.0, 7.2			
GL818065	180 x 65	5.4	3.6, 4.8, 5.4, 6.0, 7.2	4.8, 5.4	3.6, 5.4, 6.0, 7.2	4.8, 5.4, 6.0, 7.2
GL824065	240 x 65	5.4	4.8, 5.4, 6.0, 7.2	5.4, 6.0, 7.2	3.6, 5.4, 6.0, 7.2	4.8, 5.4, 6.0, 7.2
GL828065	280 x 65		4.8, 5.4, 6.0, 7.2	5.4, 6.0, 7.2	3.6, 5.4, 6.0, 7.2	4.8, 5.4, 6.0, 7.2

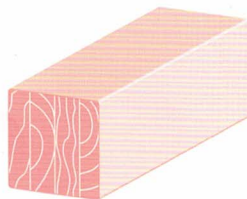
GL808888, GL806666, GL808866



GL8112112



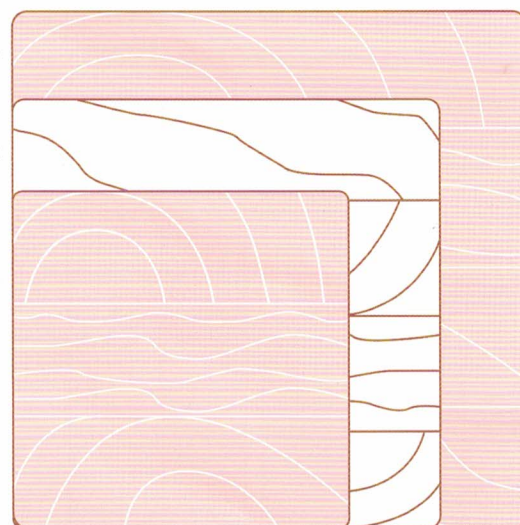
GL8135135



GL8135135

GL8112112

GL808888



GL814065



GL818065



GL824065



GL828065



For above ground use



Store in dry environment and support every 600mm prior to installation



Use with compatible handrail components



Use best building practices

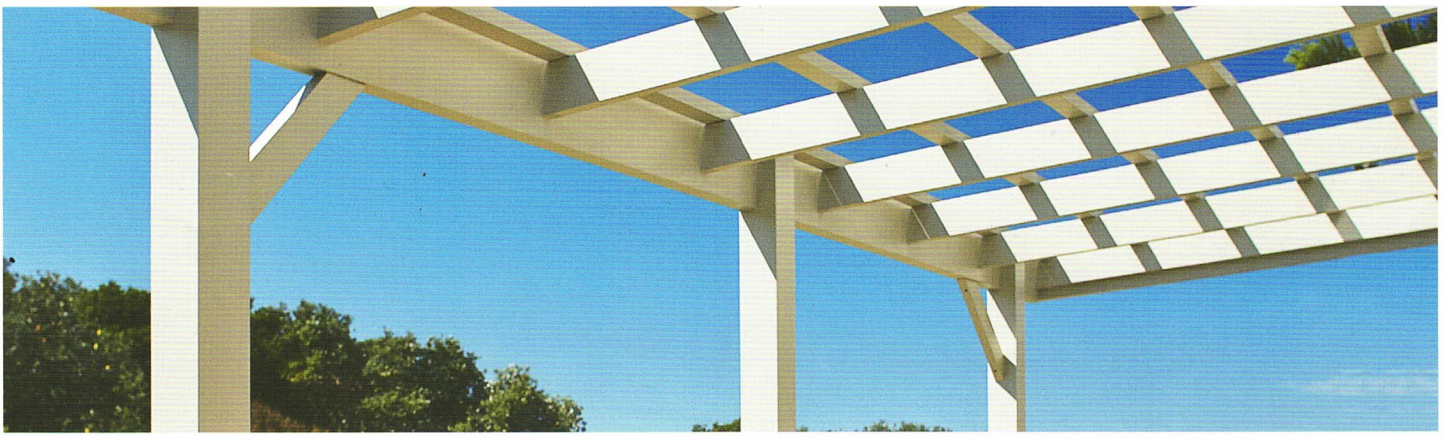


Pre-primed and treated. Seal cut ends and penetration points with wood preservative and primer

**GL10 STRONGER WITH
70x35 PIECES**

**GL8 WEAKER WITH
70x45 PIECES**

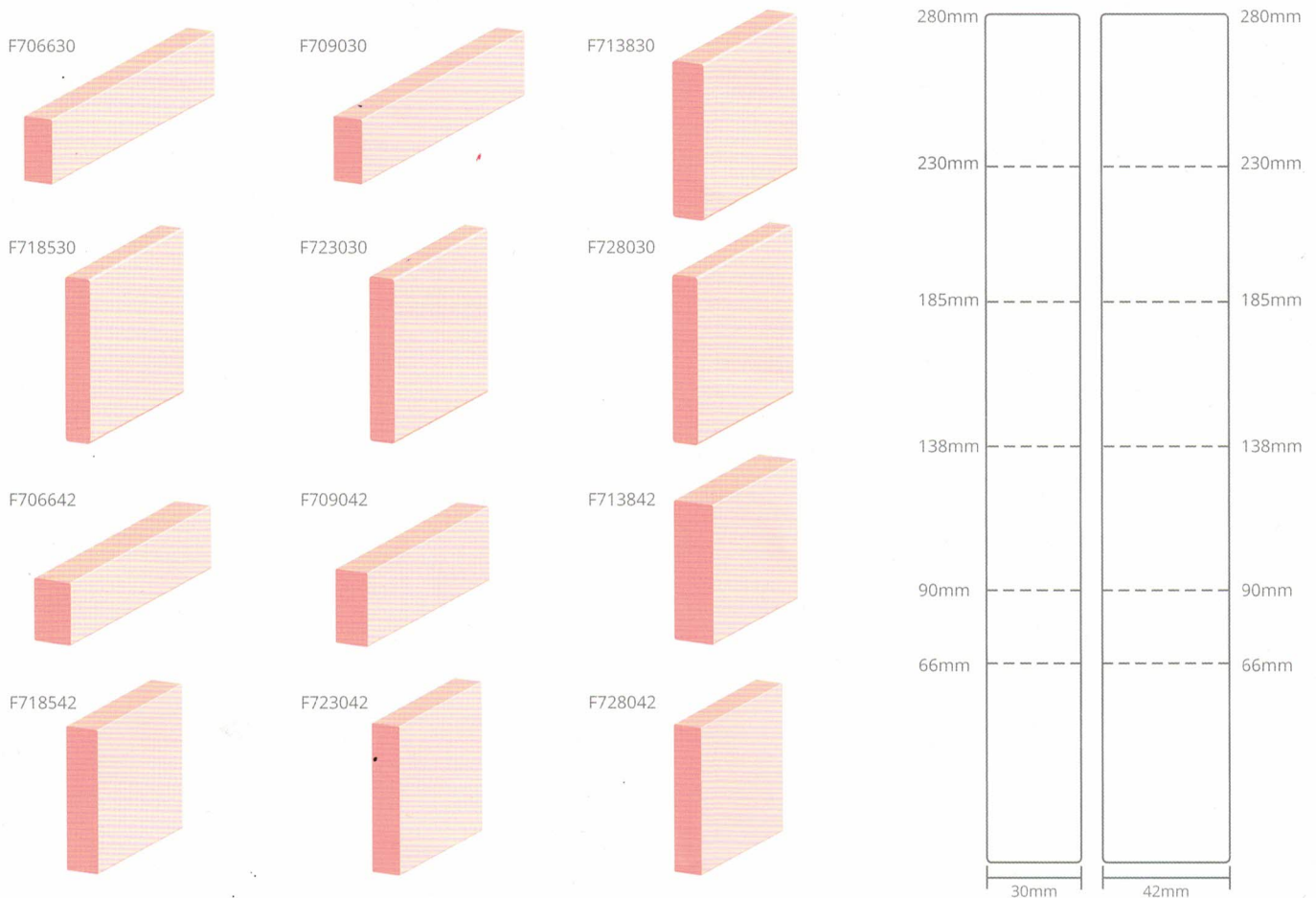
Check profile and length availability with your state sales office. Certain product lengths may not be ranged as standard and may be available as special order. Note: Profiles illustrated are not to scale.



Structural F7

LENGTH (LM) AVAILABLE

		QLD	NSW/ACT	VIC/TAS	SA	WA
F706630	66 x 30	5.4	5.4, 6.0	5.4	5.4	5.4
F709030	90 x 30	5.4	5.4, 6.0	5.4	5.4	5.4
F713830	138 x 30		5.4, 6.0	3.6, 5.4	5.4, 6.0	5.4
F718530	185 x 30	5.4, 6.0	5.4, 6.0	5.4, 6.0	3.6, 4.8, 6.0, 7.2	5.4, 6.0
F723030	230 x 30	6.0	5.4, 6.0	6.0	3.6, 4.8, 6.0, 7.2	6.0, 7.2
F728030	280 x 30	6.0	5.4, 6.0	6.0	6.0	6.0
F706642	66 x 42	5.4	5.4, 6.0	3.6, 5.4, 6.0	5.4, 6.0	5.4
F709042	90 x 42	3.6, 5.4, 6.0	3.6, 4.8, 5.4, 6.0	3.6, 4.2, 4.8, 5.4, 6.0	3.6, 4.8, 5.4, 6.0	3.6, 4.8, 5.4, 6.0
F713842	138 x 42	3.6, 4.8, 5.4, 6.0	3.6, 4.2, 4.8, 5.4, 6.0, 7.2	3.6, 4.2, 4.8, 5.4, 6.0, 7.2	3.6, 4.2, 4.8, 5.4, 6.0, 7.2	3.6, 4.2, 4.8, 5.4, 6.0, 7.2
F718542	185 x 42	3.6, 4.8, 5.4, 6.0	3.6, 4.2, 4.8, 5.4, 6.0, 7.2	3.6, 4.2, 4.8, 5.4, 6.0, 7.2	3.6, 4.2, 4.8, 5.4, 6.0, 7.2	3.6, 4.2, 4.8, 5.4, 6.0, 7.2
F723042	230 x 42	5.4, 6.0, 7.2	4.8, 5.4, 6.0, 7.2	3.6, 4.2, 4.8, 5.4, 6.0, 7.2	4.8, 5.4, 6.0, 7.2	3.0, 3.6, 4.2, 4.8, 5.4, 6.0, 7.2
F728042	280 x 42		4.8, 5.4, 6.0, 7.2	3.6, 4.2, 4.8, 5.4, 6.0, 7.2	4.8, 5.4, 6.0, 7.2	3.0, 3.6, 4.2, 4.8, 5.4, 6.0, 7.2



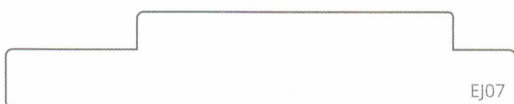
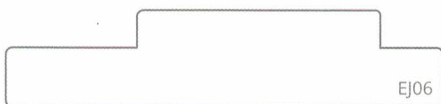
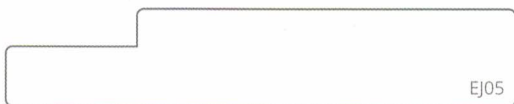
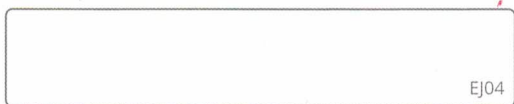
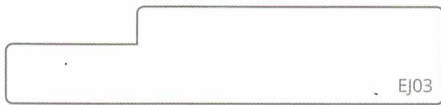
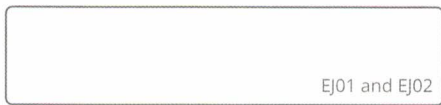
Check profile and length availability with your state sales office. Certain product lengths may not be ranged as standard and may be available as special order.
 Note: Profiles illustrated are not to scale.



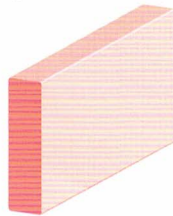
External Door Jambs

LENGTH 5.2M

		QLD	NSW/ACT	VIC/TAS	SA	WA
NON REBATED						
EJ01/5.2	112 x 30					•
EJ02/5.2	140 x 30	•	•			
EJ04/5.2	163 x 30	•				
REBATED						
EJ03/5.2	140 x 30	•	•	•		
EJ05/5.2	163 x 30	•	•			
DOUBLE REBATED - ONE FACE						
EJ06/5.2	140 x 30	•	•	•		
EJ07/5.2	163 x 30	•	•			



EJ01



EJ02



EJ04



EJ03



EJ05



EJ06



EJ07





Dressed All Round (DAR) PR4

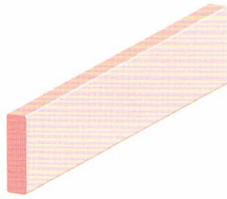
LENGTH 5.4M

		QLD	NSW/ACT	VIC/TAS	SA	WA
FJ04218PR4TP	42 x 18	•	•	•	•	•
FJ06618PR4TP	66 x 18	•	•	•	•	•
FJ09218PR4TP	92 x 18	•	•	•	•	•
FJ11018PR4TP	110 x 18		•	•		
FJ11618PR4TP	116 x 18	•	•	•	•	•
FJ13818PR4TP	138 x 18	•	•	•	•	•

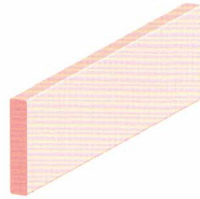
FJ04218PR4TP



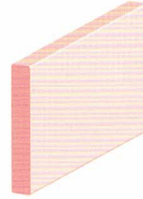
FJ06618PR4TP



FJ09218PR4TP



FJ11018PR4TP



FJ11618PR4TP



FJ13818PR4TP



Dressed All Round (DAR)

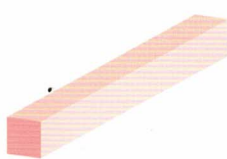
LENGTH 5.4M

		QLD	NSW/ACT	VIC/TAS	SA	WA
FJ03111TP	31 x 11	•	•	•	•	•
FJ04211TP	42 x 11	•	•	•	•	•
FJ06611TP	66 x 11	•	•	•		•
FJ09211TP	92 x 11	•	•			
FJ10511TP	105 x 11					•
FJ01818TP	18 x 18	•	•	•	•	
FJ03118TP	31 x 18	•	•	•	•	
FJ04218TP	42 x 18	•				
FJ06618TP	66 x 18	•				
FJ18718TP	187 x 18	•	•	•	•	•
FJ23018TP/5.4	230 x 18	•	•	•	•	•
FJ28018TP/5.4	280 x 18		•	•	•	•
FJ03131TP	31 x 31	•	•	•	•	•

FJ03111TP



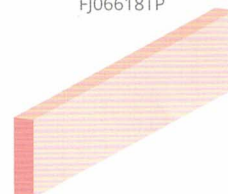
FJ03131TP



FJ10511TP



FJ06618TP



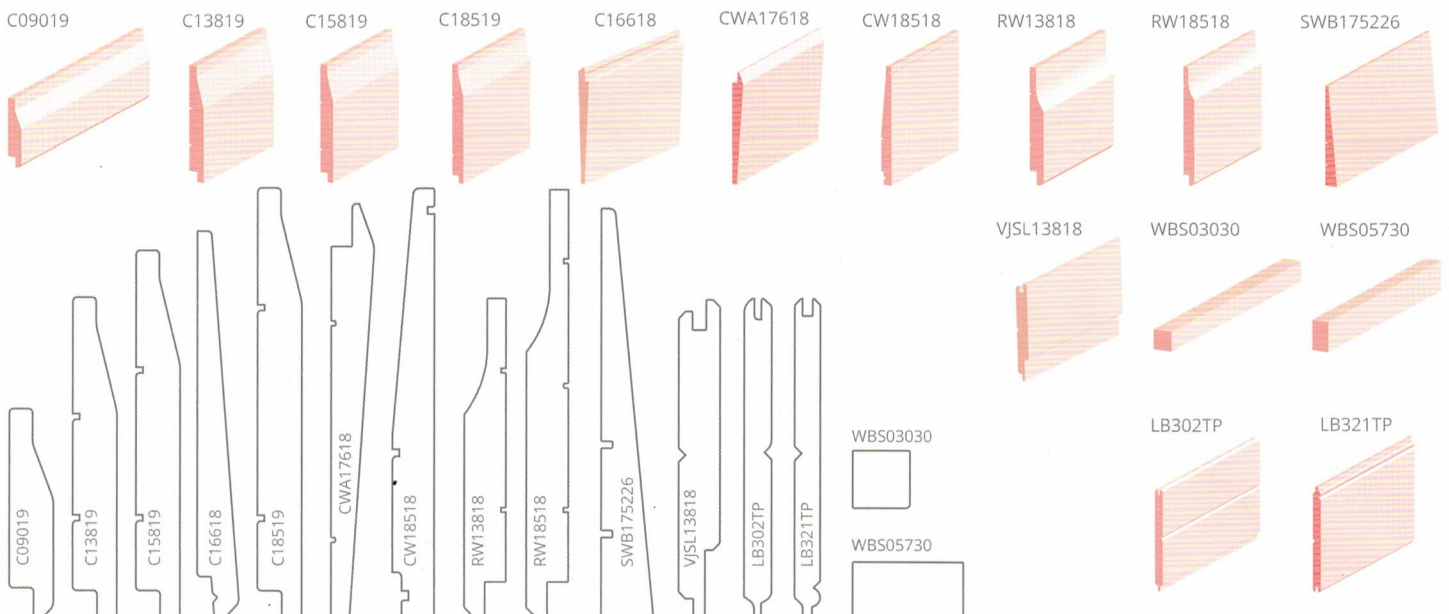
FJ23018TP





Cladding and Lining Boards

		QLD	NSW/ACT	VIC/TAS	SA	WA	LENGTH (LM)
CHAMFERBOARD							
C09019/5.4	90 x 19	•					5.4
C13819/5.4	138 x 19	•					5.4
C15819/5.4	158 x 19	•					5.4
C18519/5.4	185 x 19	•					5.4
C16618/5.4	166 x 18		•				5.4
CHAMFERBOARD - WA							
CWA17618	176 x 18					•	5.4
CLASSIC WEATHERBOARD							
CW18518/5.4	185 x 18	•	•				5.4
RUSTICATED WEATHERBOARD							
RW13818/5.4	138 x 18		•	•	•	•	5.4
RW18518/5.4	185 x 18	•	•	•	•	•	5.4
RW18518/7.2	185 x 18		•				7.2
SAWN FACE WEATHERBOARD							
SWB175226/5.4	176 x 22	•	•	•	•	•	5.4
SHIP LAP							
VJSL13818/5.4	138 x 18	•	•	•	•	•	5.4
WEATHERBOARD STOP PROFILE LIST							
WBS03030	30 x 30			•			2.7, 3.0, 3.6
WBS05730	57 x 30			•			2.7, 3.0, 3.6, 5.4
LINING BOARD							
LB302TP/5.4	138 x 11	•	•	•		•	5.4
LB321TP/5.4	138 x 11	•	•	•		•	5.4



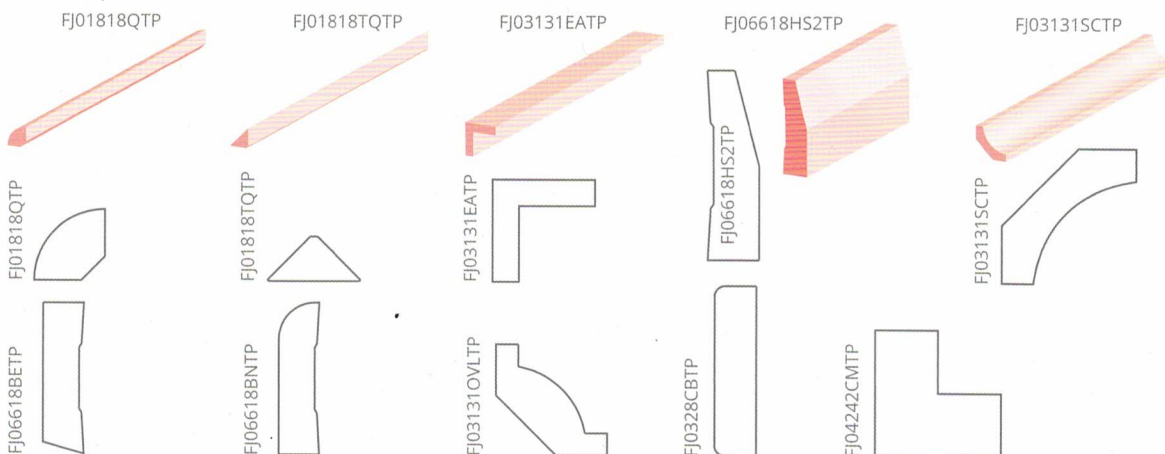
Check profile and length availability with your state sales office. Certain product lengths may not be ranged as standard and may be available as special order. Note: Profiles illustrated are not to scale.



Architraves and Mouldings (Exterior and Interior)

LENGTH 5.4M

			QLD	NSW/ACT	VIC/TAS	SA	WA
QUAD							
FJ01818QTP	18 x 18		•	•	•	•	•
FJ02323QTP	23 x 23			•			
TRI-QUAD							
FJ01818TQTP	18 x 18				•	•	
EXTERNAL ANGLE							
FJ03131EATP	31 x 31		•	•	•	•	
FJ04242EATP	42 x 42			•			
OVOLO MOULD							
FJ03131OVLTP	31 x 31				•		
COVER BATTEN							
FJ0328CBTP	32 x 8					•	
CORNER MOULD							
FJ04242CMTP	42 x 42			•			
ARCHITRAVES AND SKIRTINGS							
FJ06618BETP	66 x 18	Bevelled			•		
FJ09218BETP	92 x 18	Bevelled			•		
FJ04211BNTP	42 x 11	Bullnose	•				
FJ06611BNTP	66 x 11	Bullnose	•				
FJ06618BNTP	66 x 18	Bullnose			•		
FJ09218BNTP	92 x 18	Bullnose			•		
FJ06618HS2TP	66 x 18	Half Splayed 2	•	•	•		•
FJ09218HS2TP	92 x 18	Half Splayed 2	•	•	•		•
FJ04211STP	42 x 11	Splayed	•				
FJ06611STP	66 x 11	Splayed	•				
FJ06618PRTP	66 x 18	Pencil Round					•
FJ09218PRTP	92 x 18	Pencil Round					•
SCOTIA							
FJ03131SCTP	31 x 31		•	•	•	•	•



For the full range and profiles go to woodhouse.com.au. Check profile and length availability with your state sales office. Certain product lengths may not be ranged as standard and may be available as special order. Note: Profiles illustrated are not to scale.