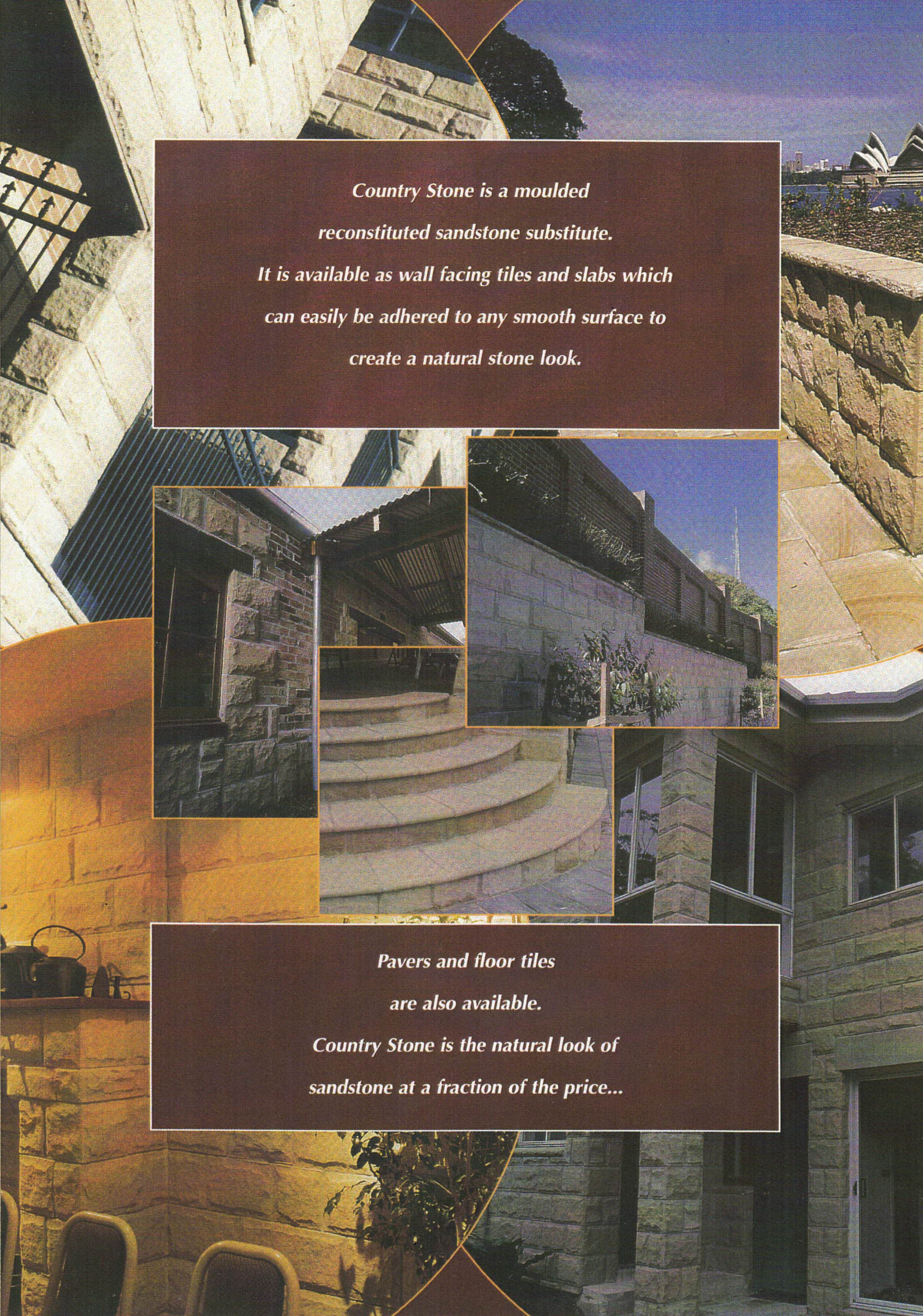


A u s t r a l i a n  
**Countrystone**

RECONSTITUTED SANDSTONE





*Country Stone is a moulded  
reconstituted sandstone substitute.  
It is available as wall facing tiles and slabs which  
can easily be adhered to any smooth surface to  
create a natural stone look.*

*Pavers and floor tiles  
are also available.  
Country Stone is the natural look of  
sandstone at a fraction of the price...*

# WALL FASCIA

Rockface tiles average 25mm in thickness.

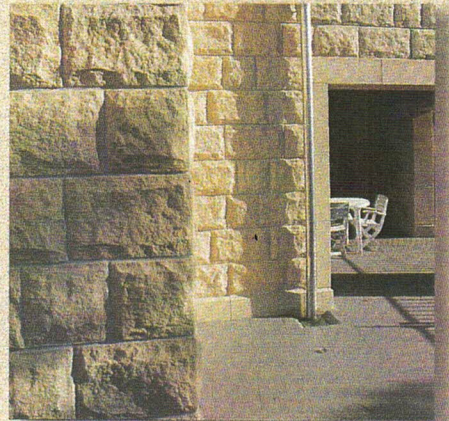
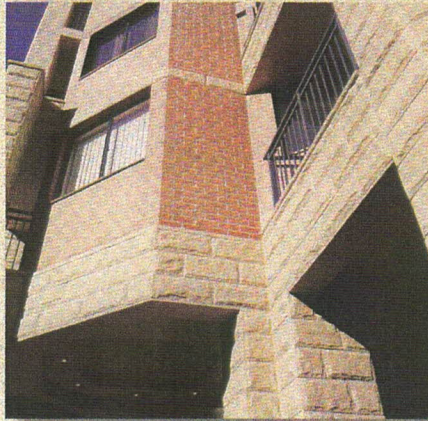
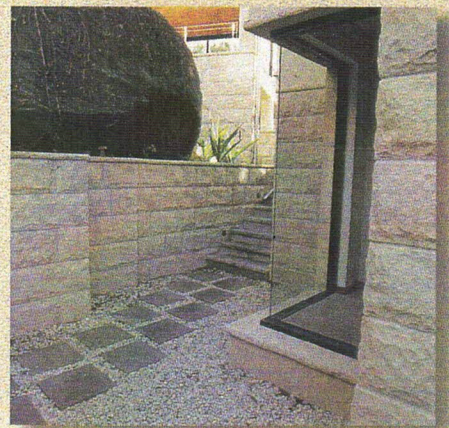
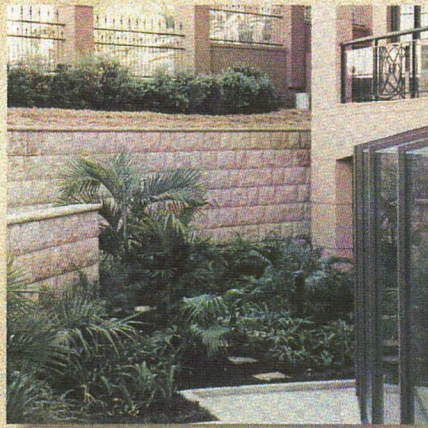
Available in 3 standard course heights:

- 185mm
- 250mm
- 300mm

Lengths vary from 200mm to 550mm.

Also available in other surface impressions such as 'sparrowpeck' and 'coarse hewn'.

Easily fixed to masonry blocks but can be added to any smooth surface.



*Numerous different moulds are used in production to ensure a wide variety of surface impressions and an authentic "handcut" look.*

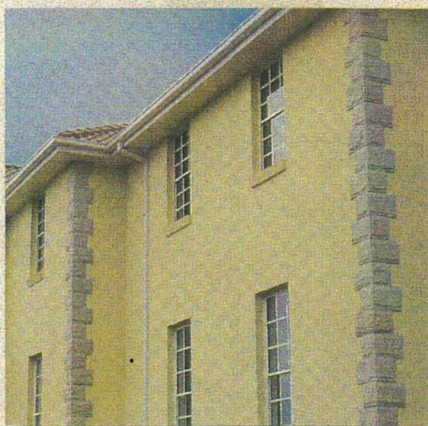
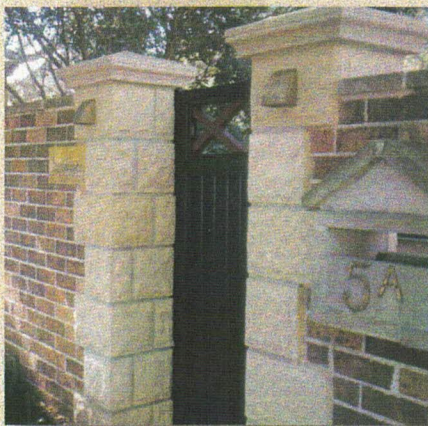
# QUOINS

L shaped fascia tiles come in all three course heights.

The 250mm course height corners will line up with 3 courses of brickwork to appear like solid stoneblock inserts.

Can be used as quoins on corners of buildings or simply to join wall fascia on a wall turning a 90° corner.

Alternatively Countrystone dry mix render can be supplied for this purpose.



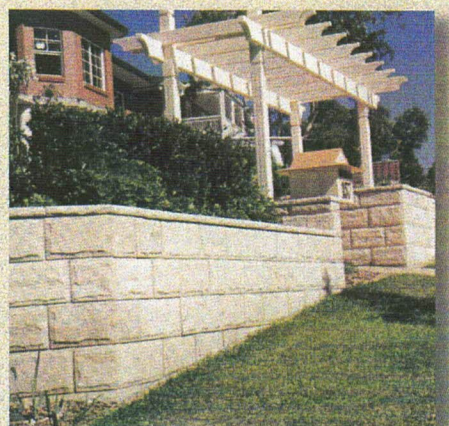
# CAPPING

For walls and piers.

3 Sided "end" cappers available.

Flat and pyramid pier caps.

Window sill ledges.



# USER FRIENDLY FASCIA INSTALLATION

Economical adhesives and grout.

Grout pointing guns available to squirt grout into joints.

Spacers available to ensure uniform joints.

Easy to cut with a masonry disc.

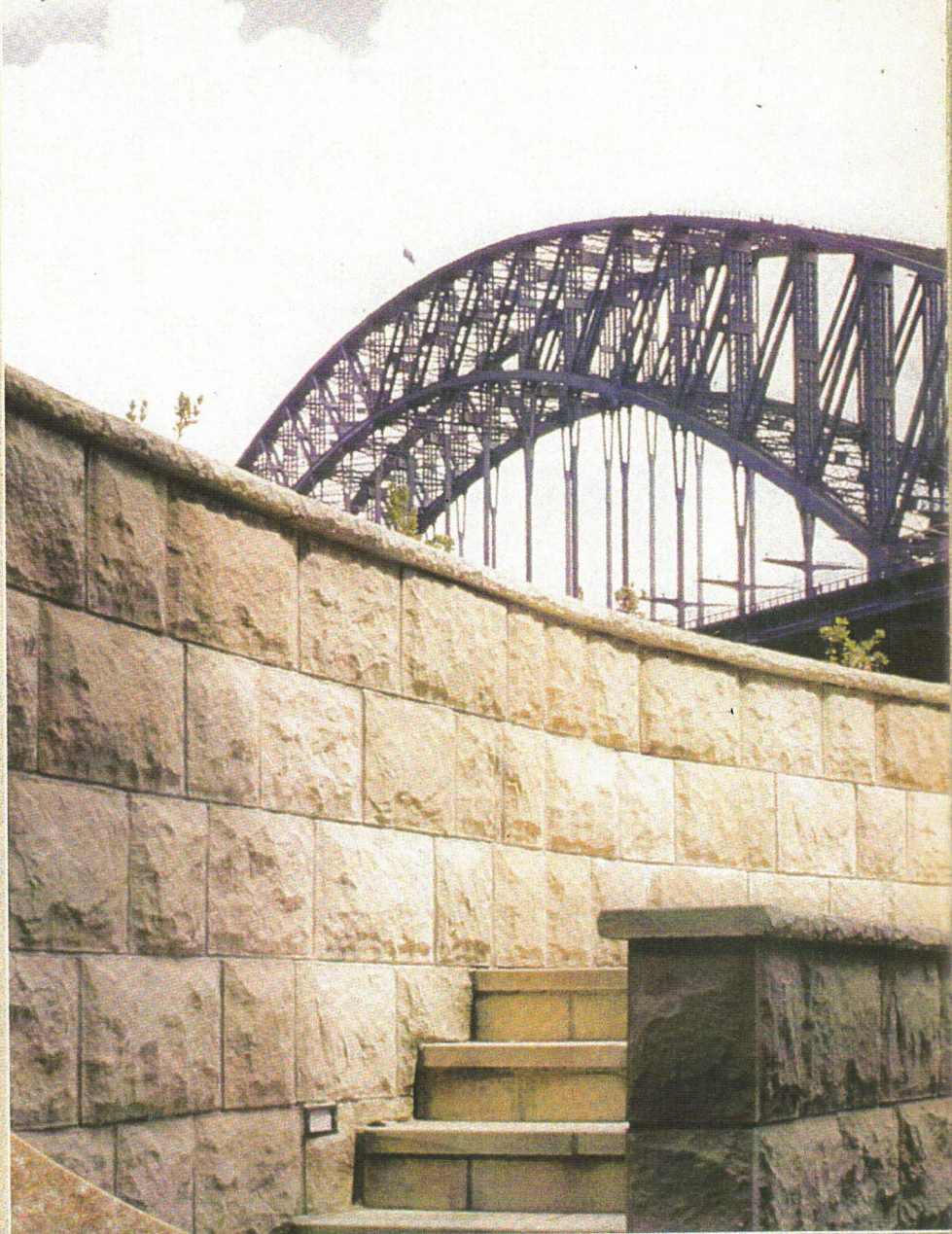
Countrystone dry mix can be used to join tiles together on corners.

Countrystone has in built water repellancy but if extra protection is required stain resistant & anti graffiti sealer are available.

Countrystone can be fixed like most conventional tiles, though some situations require special applications e.g. render coating to clay brick walls and use of flexible additives or adhesives where vibration or expansion may occur.

Your Countrystone distributor will provide you with any advice or special materials you may require.

For further information please refer to the Countrystone specification sheet that is dispatched with all orders.



Available from:

Australian  
**Countrystone**

RECONSTITUTED SANDSTONE

[www.countrystone.com.au](http://www.countrystone.com.au)