

Castle™ Pier & Letterbox Systems

Castle™ Pier rim systems are designed to easily create majestic piers, walls, garden beds and Letterboxes with ease! Available in Timber look, Sandstone, Flagstone and Stacker stone faces. Specifically designed for easy installation and to complete your retaining wall look.



Castle™ Pier rim Full piece. Perfect to create stand-alone piers and letterboxes.
Dimensions: 400mmL x 400mmW x 190mmH



Castle™ Pier rim End piece. Designed to complete your retaining wall. Create a pier or letterbox at the end of your retaining wall or sleeper fence.
Dimensions: 400mmL x 400mmW x 190mmH



Castle™ Pier rim Corner piece. Designed to create a seamless corner Pier or Letterbox. This product could not make retaining wall cornering easier.
Dimensions: 400mmL x 400mmW x 190mmH



Castle™ Pier rim Joiner piece. Designed to eliminate the use of metal posts and to ensure a quick installation. Concrete sleepers easily slide directly into the joiner pier channel either side of the Pier.
Dimensions: 400mmL x 400mmW x 190mmH



Snow

Oak

Shadow

Bone

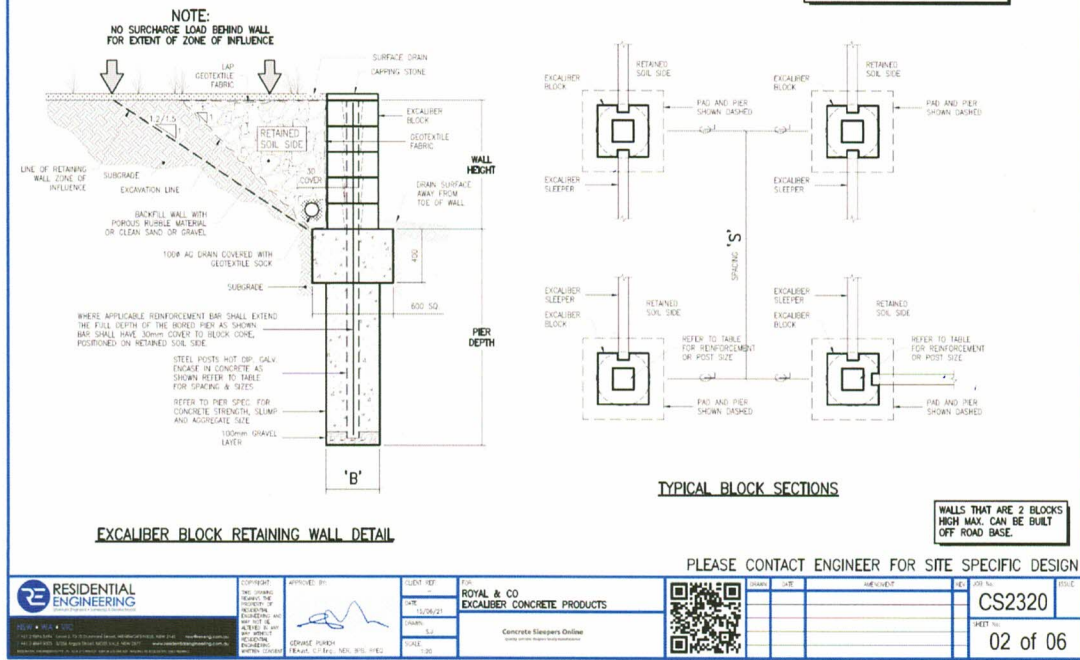
Latte

Cargo
(splash)

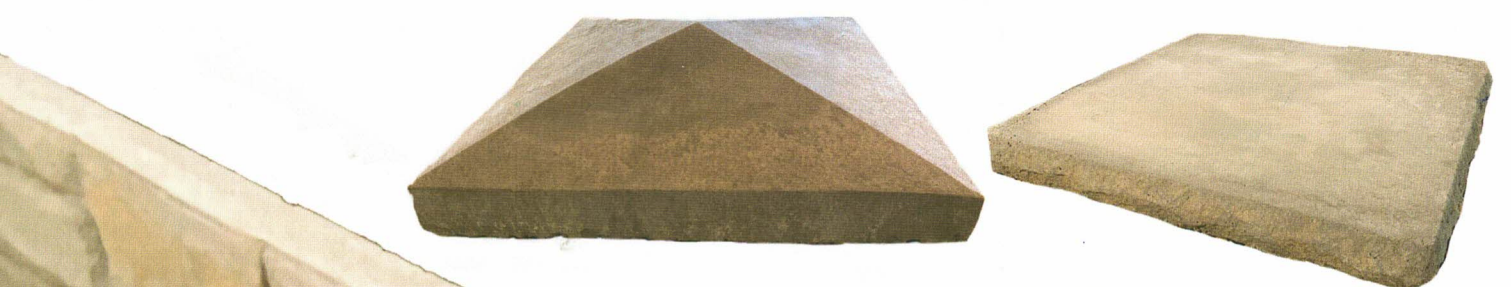
ENGINEERING SPECIFICATIONS

Please note that engineering specifications are a general guide only. You should seek specific advice for your installation. Pier design is made to compliment Royals & Co trademarked Excaliber concrete sleepers and are manufactured to Australian standards (AS4678). To extend Pier heights above wall heights use Castle Solid Pier rims (no channels).

EXCALIBER CONCRETE BLOCK RETAINING WALL SPECIFICATIONS



Please note, the design parameters in the brochures are for generic situations and only relevant for certain soil types. For any site specific designs, you will need to reach out to the Residential Engineering (RE) team. In addition, in order for RE to certify any designs, please contact the RE team for a site specific solution.



Castle™ Capping

Finish off your Piers & Leterbox with Castle™ Pier caps in Pitched for a formal look, or Flat for a more contemporary appeal.

Check out Our range of Royals & Co Excaliber™ Sealants give your retaining walls that extra protection. Other handy Installation products are also available.

