

straightcurve®

Straightcurve® Garden Edging, Raised Garden Beds and Planter Boxes



Simply Better



Create curved lines easily
Notches allow unmatched flexibility

Start your creative journey!

Whether it's off a plan or off the cuff,
it's never been as easy as this.
Be bold, be stylish, be innovative,
be playful! Start your next creative
journey here.

Contents

INTRODUCTION

- ⊕ Solution types and finishes 4

STRAIGHTCURVE® GARDEN EDGING

- ⊕ Flex Garden Edging - 75mm 8
- ⊕ Zero-Flex Garden Edging - 75mm 9
- ⊕ Flex Garden Edging - 100mm 10
- ⊕ Rigid Garden Edging - 100mm 11
- ⊕ Zero-Flex Garden Edging - 100mm 12
- ⊕ Flex Garden Edging - 150mm 13
- ⊕ Rigid Garden Edging - 150mm 14
- ⊕ Zero-Flex Garden Edging - 150mm 15

STRAIGHTCURVE® RAISED GARDEN BEDS

- ⊕ Flex Raised Garden Beds - 240mm 18
- ⊕ Rigid Raised Garden Beds - 240mm 19
- ⊕ Zero-Flex Raised Garden Beds - 240mm AVAILABLE SOON 20
- ⊕ Flex Raised Garden Beds - 400mm 21
- ⊕ Rigid Raised Garden Beds - 400mm 22
- ⊕ Zero-Flex Raised Garden Beds - 400mm 23
- ⊕ Flex Raised Garden Beds - 560mm 24
- ⊕ Rigid Raised Garden Beds - 560mm 25
- ⊕ Zero-Flex Raised Garden Beds - 560mm 26

STRAIGHTCURVE® PLANTER BOXES

- ⊕ Planter Boxes - 400mm 30
- ⊕ Planter Boxes - 560mm 31

OUR DIFFERENCE

- ⊕ Why use Straightcurve® 32



Decisions decisions... Straight or curved?

Deciding what you need or simply seeking inspiration? At some point there comes a time to choose if the lines in your garden will be straight or curving. The product range is designed to have solutions for both, so it's helpful to know just what you want!



STRAIGHT

The Straightcurve® Rigid range are suited for firm straight lines, with the Rigid Garden Edging lines also being capable of slight curves that offer plenty of strength to hold the gentlest curve.

Straightcurve® Zero-Flex products present different profiles that are all suited to making lasting, perfectly straight unmovable lines courtesy of their continuous top fold and grounding feet.



CURVED

The Straightcurve® Flex range is great for organic and flowing lines. As they flex rather than bend you can make all curves effortlessly by hand on site as you go, it comes naturally!



COMBINATIONS

It's OK to have some of each in a garden too. Our Rigid products are join compatible with our Flex products of the same height, while the Zero-Flex with thoughtful design can integrate well with the other ranges.

Finish choices

The entire Straightcurve® range is available in a weathering steel or galvanised finish. Perfect for whatever look you are going for!



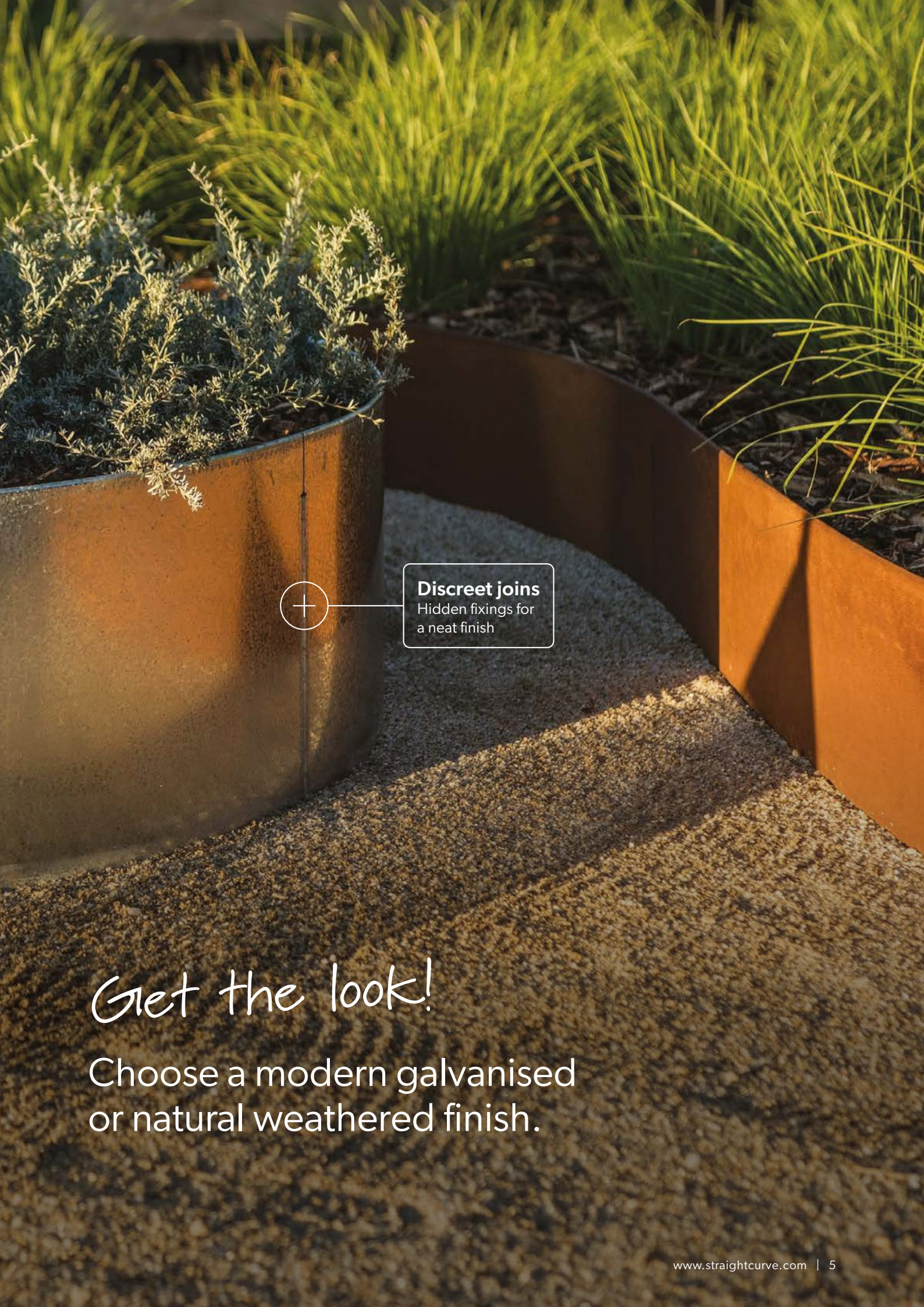
WEATHERING STEEL

Weathering steel is an alloy that develops a rusty-looking protective patina, giving a natural finish.



GALVANISED STEEL

The galvanised look is for people who prefer a grey/silver finish and is longer lasting.



Discreet joins
Hidden fixings for
a neat finish

Get the look!

Choose a modern galvanised
or natural weathered finish.



Straight lines stay true
Stabilising foot prevents movement

Got to keep them separated!

Use the Zero-Flex range for strong straight lines that stay true over time.

straightcurve®

Garden Edging

Perfect for!

- ✓ Lawn barriers
- ✓ Pathway edges
- ✓ Separating materials like stone and mulch



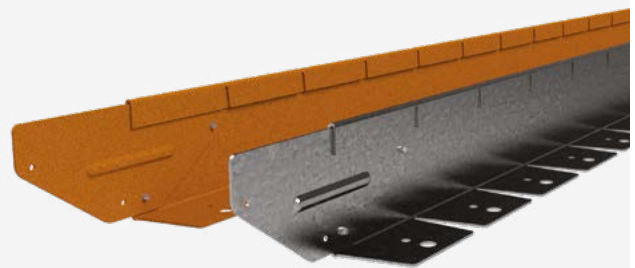
Garden Edging Range



75mm high x 2200mm Straightcurve® Flex Garden Edging

IDEAL FOR

- ✔ Meandering garden paths and curved lawn areas
- ✔ Surrounding feature trees and garden beds
- ✔ Separating areas of stone/woodchips/mulch etc
- ✔ Paving, compacted stone and artificial turf edging
- ✔ Harder ground installations



FL075WS WEATHERING STEEL
FL075GS GALVANISED STEEL



All specifications and installation
instructions can also be found here:
www.straightcurve.info/039

*or scan me
for more info!*

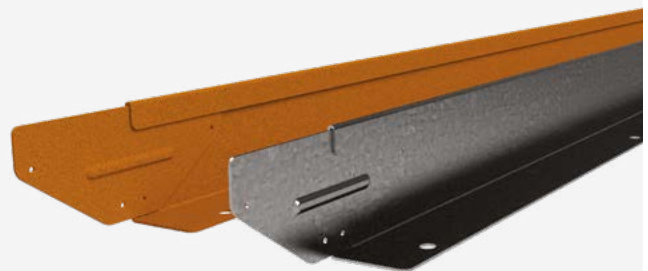




75mm high x 2200mm Straightcurve® Zero-Flex Garden Edging

IDEAL FOR

- ✔ Straight garden paths and straight lawn areas
- ✔ Linear surrounds of feature trees and garden beds
- ✔ Separating areas of stone / woodchips / mulch etc
- ✔ Paving, compacted stone and artificial turf edging
- ✔ Harder ground installations



RL075WS WEATHERING STEEL
RL075GS GALVANISED STEEL

—
All specifications and installation
instructions can also be found here:
www.straightcurve.info/040

*or scan me
for more info!*



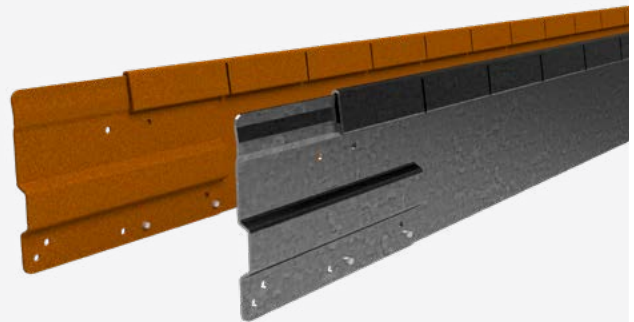
Garden Edging Range



100mm high x 2200mm Straightcurve® Flex Garden Edging

IDEAL FOR

- ✔ Meandering garden paths and curved lawn areas
- ✔ Surrounding feature trees and garden beds
- ✔ Separating areas of stone/woodchips/mulch etc
- ✔ Retrofits and hard ground where trenching is not easy



FL100WS WEATHERING STEEL
FL100GS GALVANISED STEEL



All specifications and installation
instructions can also be found here:
www.straightcurve.info/041

*or scan me
for more info!*

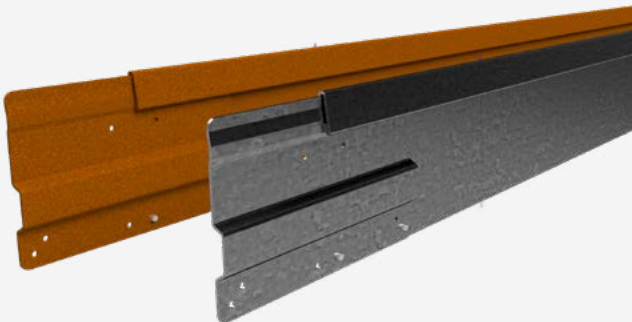




100mm high x 2200mm Straightcurve® Rigid Garden Edging

IDEAL FOR

- ✔ Straight garden paths and straight lawn areas
- ✔ Linear surrounds of feature trees and garden beds
- ✔ Separating areas of stone / woodchips / mulch etc
- ✔ Retrofits and hard ground where trenching is not easy



RL100WS WEATHERING STEEL
RL100GS GALVANISED STEEL

All specifications and installation instructions can also be found here:
www.straightcurve.info/042

or scan me for more info!



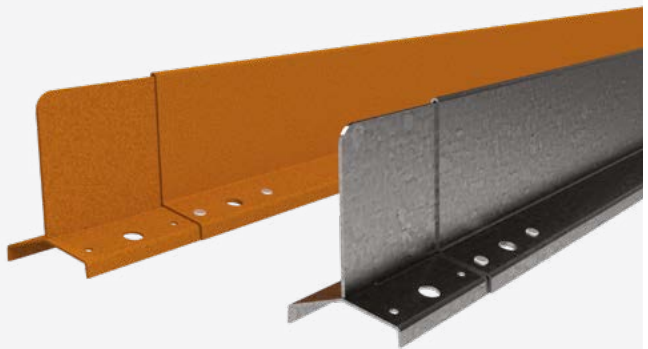
Garden Edging Range



100mm high x 2200mm Straightcurve® Zero-Flex Garden Edging

IDEAL FOR

- ✔ Designs requiring perfect straight lines that stay true
- ✔ Neat, formal and orderly courtyard gardens
- ✔ Linear tree surrounds and garden beds
- ✔ Discreet Divider between gravels/woodchips/mulch etc
- ✔ Lock in paving or compacted/loose fill paths



HL100WS WEATHERING STEEL
HL100GS GALVANISED STEEL

—
All specifications and installation
instructions can also be found here:
www.straightcurve.info/045

*or scan me
for more info!*

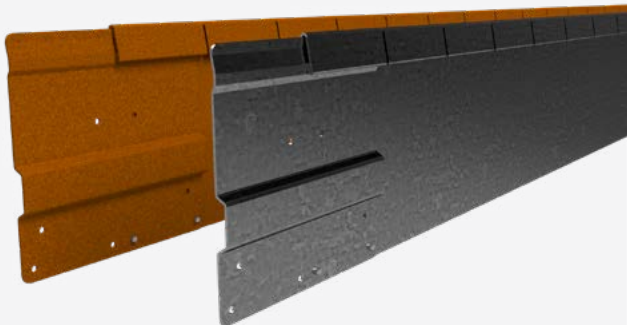




150mm high x 2200mm Straightcurve® Flex Garden Edging

IDEAL FOR

- ✔ Meandering garden paths and curved lawn areas
- ✔ As a barrier for invasive grasses and groundcovers
- ✔ Surrounding feature trees and garden beds
- ✔ Retrofits and new ground or easy dig installations
- ✔ Showing a little more edge by setting higher

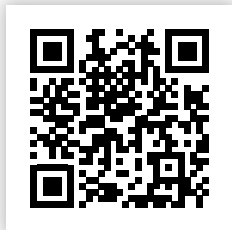


FL150WS WEATHERING STEEL
FL150GS GALVANISED STEEL



All specifications and installation instructions can also be found here:
www.straightcurve.info/043

or scan me for more info!



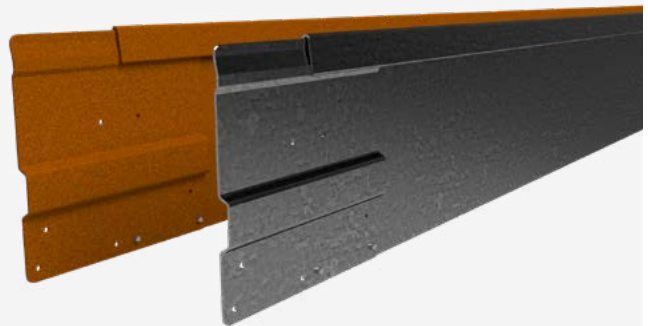
Garden Edging Range



150mm high x 2200mm Straightcurve® Rigid Garden Edging

IDEAL FOR

- ✔ Straight garden paths and straight lawn areas
- ✔ As a barrier for invasive grasses and groundcovers
- ✔ Linear surrounds of feature trees and garden beds
- ✔ Retrofits and new ground or easy dig installations
- ✔ Showing a little more edge by setting higher



RL150WS WEATHERING STEEL
RL150GS GALVANISED STEEL

All specifications and installation
instructions can also be found here:
www.straightcurve.info/044

*or scan me
for more info!*

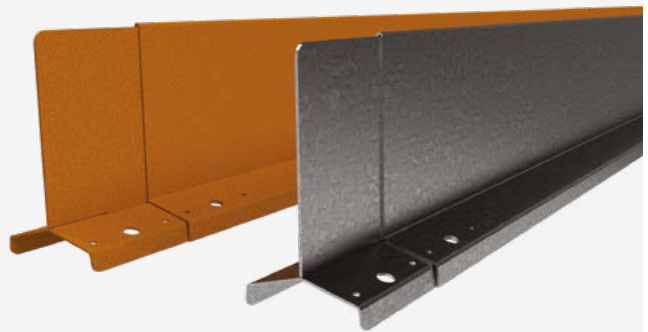




150mm high x 2200mm Straightcurve® Zero-Flex Garden Edging

IDEAL FOR

- ✔ Designs requiring perfect straight lines that stay true
- ✔ Neat, formal and orderly courtyard gardens
- ✔ As a barrier for invasive grasses and groundcovers
- ✔ Linear tree surrounds and garden beds
- ✔ Divider between gravels/woodchips/mulch etc
- ✔ Showing a little more edge by setting higher

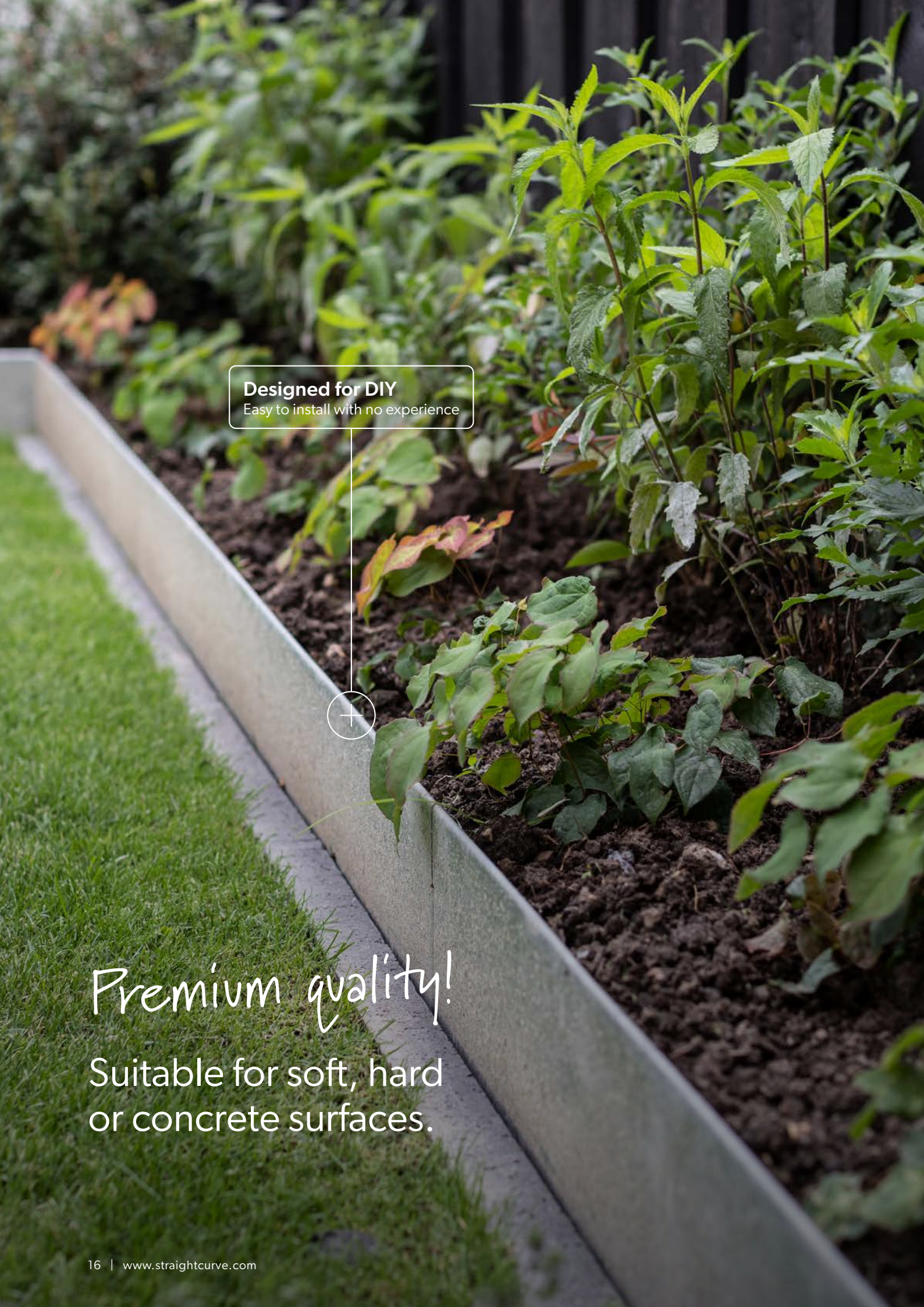


HL150WS WEATHERING STEEL
HL150GS GALVANISED STEEL

—
All specifications and installation
instructions can also be found here:
www.straightcurve.info/046

*or scan me
for more info!*



A photograph of a raised garden bed. The bed is filled with dark soil and various green plants, including some with serrated leaves and others with broader leaves. A metal edging strip runs along the side of the bed, separating it from a grassy area. A white callout box with a thin border is positioned above the edging strip, containing the text "Designed for DIY" and "Easy to install with no experience". A vertical line with a small circle at the bottom connects the callout box to the edging strip. The background is a dark wooden fence.

Designed for DIY
Easy to install with no experience

Premium quality!

Suitable for soft, hard
or concrete surfaces.

straightcurve®

Raised Garden Beds

Perfect for!

- ✓ Raised Garden Beds
- ✓ Path Step Ups & Retaining
- ✓ Lawn edging



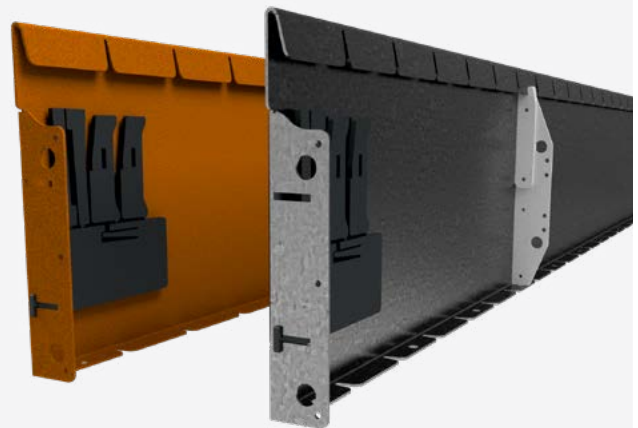
Raised Garden Beds Range



240mm high x 2160mm Straightcurve® Flex Raised Garden Bed Panel

IDEAL FOR

- ✔ Slightly raised and curving garden bed borders
- ✔ Slightly raised closed shape feature beds
- ✔ Feature tiered lawn areas within a garden
- ✔ Terraces and retaining across gentle slopes
- ✔ Hard surface mounting i.e. rooftops/decking



FL240WS WEATHERING STEEL
FL240GS GALVANISED STEEL



All specifications and installation
instructions can also be found here:
www.straightcurve.info/047

or scan me
for more info!

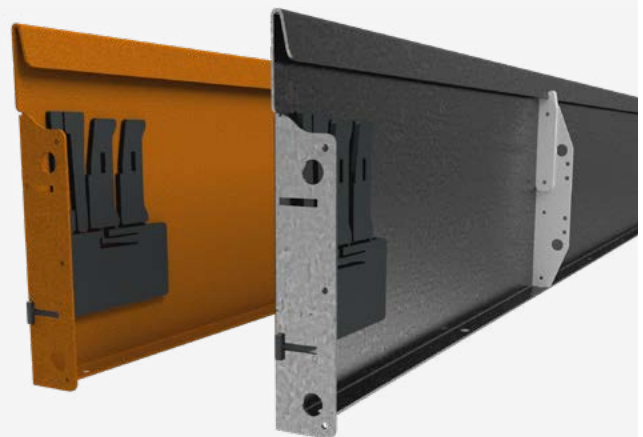




240mm high x 2160mm Straightcurve® Rigid Raised Garden Bed Panel

IDEAL FOR

- ✔ Slightly raised, straight garden bed borders
- ✔ Slightly raised, closed shape feature beds
- ✔ Path steps and retaining across gentle slopes
- ✔ Lawn edges that stand taller or are buried deeper
- ✔ Hard surface mounting i.e. rooftops/decking



RL240WS WEATHERING STEEL
RL240GS GALVANISED STEEL

All specifications and installation
instructions can also be found here:
www.straightcurve.info/048

or scan me
for more info!



Raised Garden Beds Range

240mm high Straightcurve® Zero-Flex Raised Garden Bed Panel

IDEAL FOR

- ✔ Designs requiring perfect straight lines and corners
- ✔ Slightly raised, straight-sided feature beds
- ✔ Path steps and retaining across gentle slopes
- ✔ Lawn edges that stand taller or are buried deeper
- ✔ A low to the ground planter box look!
- ✔ Hard surface mounting i.e. rooftops/decking

AVAILABLE PANEL LENGTHS

400MM	600MM	800MM	1000MM	1200MM	2000MM
-------	-------	-------	--------	--------	--------

Combine panels to make any size in 200mm increments

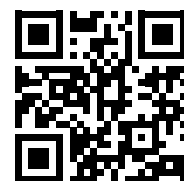


AVAILABLE SOON

FHL240 WEATHERING STEEL
FHL240GS GALVANISED STEEL

All specifications and installation instructions can also be found here:
www.straightcurve.info/188

or scan me for more info!

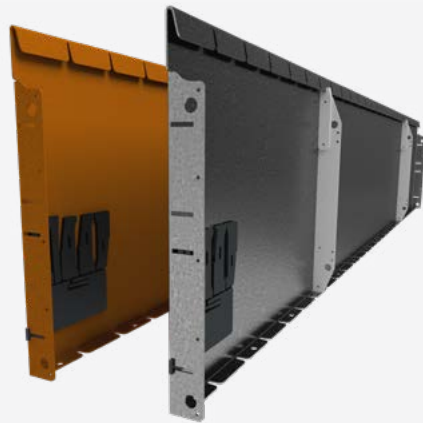




400mm high x 2160mm Straightcurve® Flex Raised Garden Bed Panel

IDEAL FOR

- ✔ Raised and curving garden bed borders
- ✔ Raised closed shape feature beds and kitchen gardens
- ✔ Feature tiered lawn areas within a garden
- ✔ Terraces and retaining across gentle slopes
- ✔ Hard surface mounting i.e. rooftops/decking



FL400WS WEATHERING STEEL
FL400GS GALVANISED STEEL



All specifications and installation
instructions can also be found here:
www.straightcurve.info/049

*or scan me
for more info!*



Raised Garden Beds Range



400mm high x 2160mm Straightcurve® Rigid Raised Garden Bed Panel

IDEAL FOR

- ✔ Raised, straight garden bed borders
- ✔ Raised, closed shape feature beds and kitchen gardens
- ✔ Feature tiered lawn areas within a garden
- ✔ Terraces and retaining across gentle slopes
- ✔ Hard surface mounting i.e. rooftops/decking



RL400WS WEATHERING STEEL
RL400GS GALVANISED STEEL

All specifications and installation
instructions can also be found here:
www.straightcurve.info/050

*or scan me
for more info!*





400mm high Straightcurve® Zero-Flex Raised Garden Bed Panel

IDEAL FOR

- ✔ Designs requiring perfect straight lines and corners
- ✔ Raised, straight-sided feature beds and kitchen gardens
- ✔ Terracing and retaining across gentle slopes
- ✔ Narrow free-standing raised garden beds
- ✔ An extra large custom made planter box look
- ✔ Hard surface mounting i.e. rooftops/decking



AVAILABLE PANEL LENGTHS

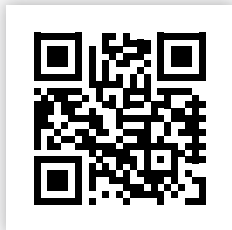
400MM	600MM	800MM	1000MM	1200MM	2000MM
-------	-------	-------	--------	--------	--------

Combine panels to make any size in 200mm increments

FHL400WS WEATHERING STEEL
FHL400GS GALVANISED STEEL

All specifications and installation instructions can also be found here:
www.straightcurve.info/189

or scan me for more info!



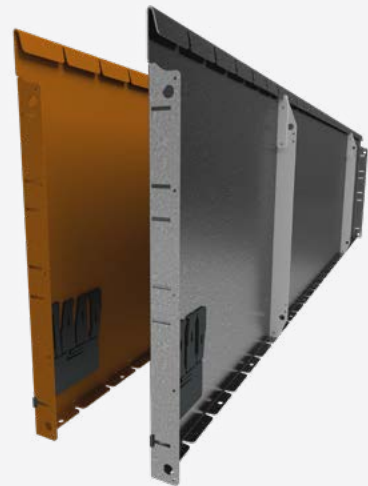
Raised Garden Beds Range



560mm high x 2160mm Straightcurve® Flex Raised Garden Bed Panel

IDEAL FOR

- ✔ Tall and curving garden bed borders
- ✔ Tall closed shape feature beds and kitchen gardens
- ✔ Feature tiered lawn areas within a garden
- ✔ Terraces and retaining across gentle slopes
- ✔ Hard surface mounting i.e. rooftops/decking



FL560WS WEATHERING STEEL
FL560GS GALVANISED STEEL



All specifications and installation
instructions can also be found here:
www.straightcurve.info/051

*or scan me
for more info!*

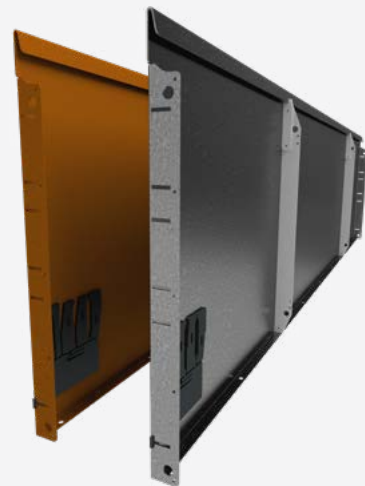




560mm high x 2160mm Straightcurve® Rigid Raised Garden Bed Panel

IDEAL FOR

- ✔ Tall, straight garden bed borders
- ✔ Tall, closed shape feature beds and kitchen gardens
- ✔ Feature tiered lawn areas within a garden
- ✔ Terraces and retaining across gentle slopes
- ✔ Hard surface mounting i.e. rooftops/decking



RL560WS WEATHERING STEEL
RL560GS GALVANISED STEEL

All specifications and installation
instructions can also be found here:
www.straightcurve.info/052

or scan me
for more info!



Raised Garden Beds Range



560mm high Straightcurve® Zero-Flex Raised Garden Bed Panel

IDEAL FOR

- ✔ Designs requiring perfect straight lines and corners
- ✔ Tall, straight-sided feature beds and kitchen gardens
- ✔ Terracing and retaining across gentle slopes
- ✔ Narrow free-standing raised garden beds
- ✔ An extra large custom made planter box look
- ✔ Hard surface mounting i.e. rooftops/decking

AVAILABLE PANEL LENGTHS

400MM	600MM	800MM	1000MM	1200MM	2000MM
-------	-------	-------	--------	--------	--------

Combine panels to make any size in 200mm increments

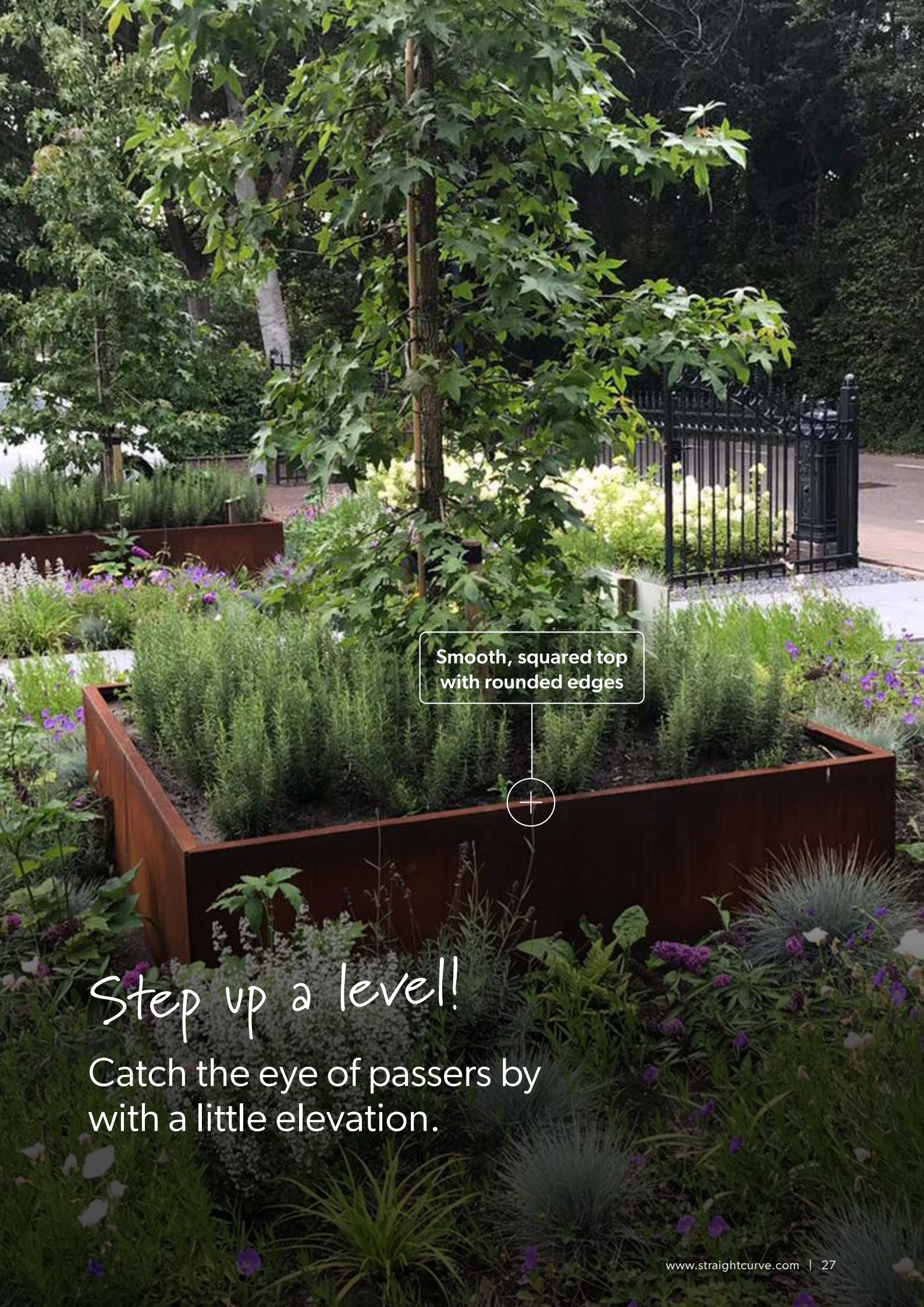


FHL560WS WEATHERING STEEL
FHL560GS GALVANISED STEEL

All specifications and installation instructions can also be found here:
www.straightcurve.info/190

or scan me for more info!






Smooth, squared top
with rounded edges

Step up a level!

Catch the eye of passers by
with a little elevation.



Quick to install

Designed with time-saving features

velvæen

Stunning presentation

Neat and attractive finish, gorgeous
seam lines and hidden fixings.

straightcurve®

Planter Boxes

Perfect for!

- ✓ A stylish planter box finish
- ✓ Easy-build custom planters for bespoke designs
- ✓ Something that feels strong and lasts



Planter Box Range

Hidden fixings with free-standing or bolt down capabilities



400mm high Straightcurve® Planter Box Kit or Panel

IDEAL FOR

- ✔ Square and rectangular planters
- ✔ L and U and other funky shaped planter boxes
- ✔ Custom made planter boxes for particular situations
- ✔ Bases for seats and tables
- ✔ Free standing planter boxes on rooftops or hard surface areas
- ✔ Hard surface mounting i.e. rooftops/decking
- ✔ Difficult to access sites - flat packed for easier delivery

AVAILABLE PANEL LENGTHS

400MM	600MM	800MM	1000MM	1200MM
-------	-------	-------	--------	--------

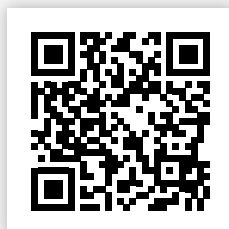
Combine panels to make any size in 200mm increments



FHL400WS WEATHERING STEEL
FHL400GS GALVANISED STEEL

All specifications and installation instructions can also be found here:
www.straightcurve.info/191

or scan me for more info!





560mm high Straightcurve® Planter Box Kit or Panel

IDEAL FOR

- ✔ Square and rectangular planters
- ✔ L and U and other funky shaped planter boxes
- ✔ Custom made planter boxes for particular situations
- ✔ Free standing planter boxes on rooftops or hard surface areas
- ✔ Hard surface mounting i.e. rooftops/decking
- ✔ Difficult to access sites - flat packed for easier delivery



AVAILABLE PANEL LENGTHS

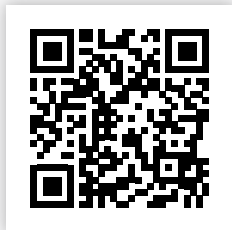
400MM	600MM	800MM	1000MM	1200MM
-------	-------	-------	--------	--------

Combine panels to make any size in 200mm increments

FHL560WS WEATHERING STEEL
FHL560GS GALVANISED STEEL

All specifications and installation instructions can also be found here:
www.straightcurve.info/192

or scan me for more info!



Child & animal friendly

Rolled tops and internal fixings
for added safety



Why use Straightcurve[®]?

"Once we'd connected the lengths, seeing it on the ground allowed us to adjust the curves just right. It really did flex into shape naturally."

"It's definitely DIY friendly, I'm no landscaper but when my Mum visited, she asked what landscaping company I used. Not bad hey?"

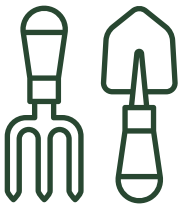
"Often people say things are easy when they aren't, but this was truly easy."

"The Zero-Flex is amazing, what a perfect solution for when we need it straight. That used to cause us a lot of headaches, we appreciate the quality finish it gives us."

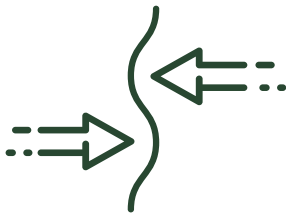
"I've worked with plenty of steel edging but knocking it out in a third of the time makes a huge difference for our business, and I don't miss the welding equipment at all!"



Landscaper & DIY user benefits



DESIGNED FOR DIY



NATURALLY FLEXIBLE, EASY TO CURVE



STRAIGHT LINES STAY TRUE



DISCREET, NEAT JOINING



QUICK TO INSTALL



SMOOTH ROLLED TOP EDGES

GREAT BENEFITS

- ✔ Easy and quick installation
- ✔ Each connection is always right
- ✔ Suitable for soft, hard or concrete surfaces
- ✔ Natural looking finish
- ✔ Durable and strong – won't crack, warp or shift later
- ✔ Easy combinations of rigid and flex garden edges
- ✔ Products made for straight lines and curves
- ✔ No need to concrete edges in place
- ✔ No welding required
- ✔ Sold in sets with stakes and connectors.

Simply Better

straightcurve®

Australian Distribution Partner:
Straightcurve Australia Pty Ltd
1300 943 667
assistance@straightcurve.com.au

Distributor:

www.straightcurve.com